



Shows heavy bottom rail pair of Entrance gates, prior to automation.

Safety Notes - Please Read:

If you are considering automating these gates please ask for advice. For any Jacksons five bar gates to be retro-fitted for automation we insist that an extra heavy bottom rail across the width of the gate is fitted to avoid twisting. It is also essential for any swing gates that are automated to be fitted with finger guards.

See residential auto-gates pages for more info.

All catches and latches are for adult operation only - children must be supervised.



Entrance Gates for the Drive or Field

Our entrance gates are designed with a heavy rail across the top for extra strength. All timber used throughout is superior quality planed Jakcure® softwood guaranteed for 25 years. Rail and brace crossings are fixed with stainless steel bolts. The gates are cross braced for extra strength and all joints are morticed and tenoned.

Gates are 1.2m high except for the hanging stile which is 1.5m. Hanging Stile 125 x 75mm, Slam Stile 75 x 75mm, Top Rail is 100 x 75mm and under rail and cross braces 75 x 25mm. Supplied in natural Jakcure® finish. As standard, larger sizes are right hand hanging, smaller sizes are left hand hanging, see below for details.

Entrance Gates - Narrow - Specification (0.9 - 1.5m wide)

Single cross braced. Gates are 1.2m high except for the curved hanging stile which is 1.5m and slam stile 75 x 75mm. Top rail is 100 x 75mm.
Left hand hanging when viewed from the front.
(opposite hanging available at no additional cost).

	Length	Ref - LHH	Ref - RHH
Items required for hanging a single narrow entrance gate; Galvanised fittings, Hinge set, Spring catch, Anti-lift device, Padlock & two 2.1m, 150 x 150mm gate posts.	0.9m	262800	262880
	1.2m	262900	262990
	1.5m	263000	263090

TRHSSLN

Entrance Gates - Wide Specification (1.8 - 3.6m wide)

Items required for hanging a single wide entrance gate; Galvanised fittings, Hinge set, Spring catch, Anti-lift device, Padlock, 2.1m x 175 x 175mm Hanging post and 2.1m x 150 x 150mm Shutting post.
Right hand hanging when viewed from the front (opposite hanging available at no additional cost).

	Length	Ref - RHH	Ref - LHH
Hanging system for:	1.8m	263100	263110
Single entrance gate	2.1m	263200	263220
Double wide entrance gate (includes loop over, drop bolt & centre gate stop etc.)	2.4m	263300	263330
	2.7m	263400	263440
	3.0m	263500	263550
	3.3m	263600	263660
	3.6m	263700	263770

TRHSSL

TRHSDL

MADE TO ORDER (CANNOT BE CANCELLED ONCE ORDERED) CHECK FOR AVAILABILITY



Uni-Gates for the Drive or Field



Our Uni-Gates are called this as they are ‘Universal’ which means they can be hung as right or left handed. They are designed with a heavy top rail over the entire width for extra strength. All timber used throughout is superior quality planed Jakcured softwood guaranteed for 25 years. Top bars are chamfered and both hanging and slam stiles are drilled to allow gates to be hung on the left or right. Rail and brace crossings are bolted with stainless steel bolts. The gates are cross braced for extra strength and all joints are morticed and tenoned.

Uni-Gates
Specification (0.9 - 4.2m wide)
Gates are 1.27m high overall. Top rail 100mm x 75mm, under rail and cross braces 75 x 25mm. Hanging and slam stiles (rounded top) 100 x 75mm, with both stiles drilled to allow gates to be hung on the left or the right except gates under 2.1m. Supplied in natural Jakcure® treated finish.

Narrow Uni-Gates			Wide Uni-Gates	
Length	Left Hand Hang Ref.	Right Hand Hang Ref.	Length	Ref
0.9m*	255000 ●	255000R ○	2.4m	255500 ●
1.05m*	255090 ●	255090R ○	2.7m	256600 ●
1.2m	251100 ●	251100R ○	3.0m	257700 ●
1.5m	255200 ●	255200R ○	3.3m	258800 ●
1.8m	255300 ●	255300R ○	3.6m	259900 ●
2.1m	255400 ●	255400R ○	3.9m	256000 ●
			4.2m	256100 ●

*with a single brace

Additional items required to hang single Uni-Gate; Galvanised fittings, Hinge set, Spring catch, anti-lift device padlock 2.1m x 175 x 175mm hanging post & 2.1m x 150 x 150mm shutting post. Please see following pages. [Ref TRHSSL](#)

Safety Notes - Please Read:
If you are considering automating these gates please ask for advice. For any Jacksons five bar gates to be retro-fitted for automation, we insist that an extra heavy bottom rail across the width of the gate is fitted to help withstand the automation forces. It is also essential for any swing gates that are automated to be fitted with finger guards. See residential auto-gates pages for info. All catches and latches are for adult operation only - children must be supervised.

Spring Catch Set made up of (HJ + K) For use behind posts	271300 ●	Ref	Gate Catch with wooden stump and wear plates 1.8m x 100 x 100mm to support full height of gate and catch on 2nd rail down for use on Entrance and Uni-Field gates (P)	351801BM ●	Ref
Spring Catch Set as alternative to item K (HJL) For use between posts	271350BM ●		Universal Hold Back Catch for wood or metal gates with wear plates (Q)	272000 ●	
Hinge Set with adjustable bottom hinge for wooden posts supplied with anti-theft nuts (ABCD)	271800 ●		Loopover Catch complete with bolt (for connecting two gates) and staple with extra knob (S)	271410 ●	
Hinge Set with hooks to build into brickwork (ACG)	274100 ●		Auto Catch with striker (T)	438300 ●	
Hinge Set with double swing rockerbottom hinge for wooden posts (A B &E)	350100 ●		Drop Bolt (U)	351400 ●	
Pair Hooks on 100mm plate 19mm pin (M) (for use with timber wall plates)	438400 ●		Heavy Lockable Drop Bolt - Similar to option 'U'	351410BM ●	
Pair of Hinge Hooks for concrete or wooden posts from 150 - 250mm (extra long) (F)	438500 ●		Anti-Lift device (V) for padlock see page147 (Not for use with hooks on plates Ref 4384)	271200BM ●	
Wrought Heavy Latch for gates with rocker bottom hinge shown pic N. Constituent parts shown in pics marked N-A and N-B	351010BM ●		Fitting irons to gates (our fitting charge)	271700 ●	
			Gate Latch-GRP General Purpose - 1 way lockable (W)	354600 ●	
Gate Catch to fix in cement with wear plates (O)	1BSLPOSTBM ●		Gate Latch Delux 2 Way lockable - rust free, lock from either side of the gate (X)	354700 ●	

Safety Warning: Jacksons' magnetic pull latches are designed to be operated by adults only. Children must be supervised at all times if operating moving parts.

Self closing Adjustable Hinge
Gives vertical and horizontal adjustment with the stainless steel spring ensuring that the gates always close. We recommend that it is used with the magnetic latch range, for gates up to 1.5m



Self closing adjustable hinge for timber gate (A)	354400 ●	Ref
Self closing adjustable hinge for steel gate (B)	354420 ●	



The Vertical Pull Latch is ideal for gates that need to always to be closed, for example swimming pool gates and where you need to confine pets.

Vertical Pull Latch (C) 354330 ●



The Extended Pull Latch is the same as the Vertical Pull Latch but the handle has been extended to ensure toddlers cannot reach the latch.

Extended Pull Latch (D) 354500 ●



The Pull Latch is a general all purpose latch suitable for gates that do not require the security of a keyed lock.

Pull Latch (E) 354200 ●





Jakcure® Gate Posts

Square with tops shaped four ways. The gate 175mm x 175mm hanging posts are stress relieved by having a saw cut in the middle of one side allowing the timber to move as it dries out or swells according to the weather, thus avoiding unsightly splits. The Hanging Posts should be placed so the stress relieving cut is at 90° to the gate hooks. For ballast & cement see page 146. We recommend that for gates 2.4m and wider 175 x 175mm posts are used.

Length	Section	Ref
Hanging Posts for field gates		
2.1m Fine sawn finish	175 x 175mm	272400 ●
2.1m Fine sawn finish	150 x 150mm	274000 ●
Gate Posts for special gates		
2.4m Fine sawn finish	125 x 125mm	272500 ●
2.4m Fine sawn finish	175 x 175mm	273800 ●
2.4m Fine sawn finish	150 x 150mm	273900 ●
2.7m Fine sawn finish	125 x 125mm	272600 ●
2.7m Fine sawn finish	150 x 150mm	274090 ●
2.7m Fine sawn finish	175 x 175mm	273880 ●



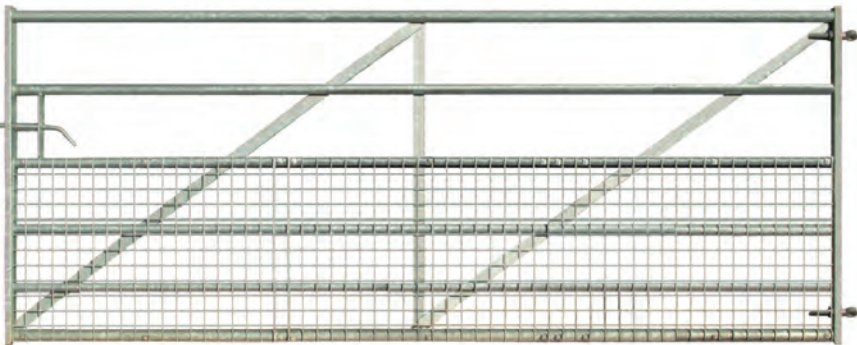
Wall Plates		
1.8m Planed finish	95 x 70mm	228000 ●
2.1m Planed finish	95 x 70mm	228050 ■
2.4m Planed finish	95 x 70mm	228100 ■
1.8m Planed finish	95 x 45mm	171000 ●
2.1m Planed finish	95 x 45mm	171021 ●
2.4m Planed finish	95 x 45mm	171024 ●

Centre Gate Stops		
For use with entrance and uni-gates		
Courtyard gates 65mm	927110 ■	
Featherboard and Boarded gates	927120 ●	
	602200 ■	



Heavy Metal Field Gate

Gates are 1.15m high. Hanging stile of 50 x 25mm box section. Slam stile of 50 x 25mm box section. Top and bottom rails 41.5mm tube, with middle rails 32mm tube. With adjustable hinges and padlockable sliding latch. Also available with welded mesh cladding, please see below. (600mm high x 50 x 50 x 4mm) To the bottom part of the gate



*Welded mesh normally be clad to inside of the gate with bracing on outside to avoid animals climbing up the rails. Please also note: Any metal field gate clad with mesh should be hung on a 114mm diameter posts.

● STOCK ITEMS ○ MADE TO ORDER (CANNOT BE CANCELLED ONCE ORDERED)

Heavy Metal Field Gates

	standard un-clad	clad with w. mesh
Length	Ref	Ref
1.2m	440800 ○	440880BM ●
2.1m	441100 ○	441110BM ●
2.4m	441200 ○	441220BM ●
2.7m	441300 ○	441330BM ●
3.0m	440200 ●	440220BM ●
3.3m	440300 ●	440330BM ●
3.6m	440400 ●	440440BM ●
4.2m	440500 ●	440550BM ●
4.6m	440600 ●	440660BM ●

Drop Bolts & Loop Over Catches

Drop bolts and loop over catches are available for self fitting if pairs are required

Drop bolt	453880 ●
Loop over catch	453700 ●

Hanging Posts

1.875m long 89mm Diam.	453200 ●
1.875m long 114mm Diam.	453100 ●

89mm diameter posts should be used up to 3.3m wide 114mm diameter posts should be used on 3.3m wide and above

Slam Posts

1.8m long 88.9mm Diam.	453600 ●
------------------------	----------





Estate Railings & Gates



Estate fencing has a classic style that everyone associates with country parks and rural estates. It's been around for years. Originally it was made from flat bar, which is prone to bending and can also be heavy.

We have improved on the traditional fence and created an economical modern, tubular version that is stronger, lighter and virtually maintenance free. Like all Jacksons steel fencing it is galvanised and has a 25 year service life guarantee.

Metal Estate Railing Fencing

Panel 2m wide overall x 1.2m high above finished ground level. End posts / uprights 50 x 25mm RHS (end posts are drilled with 3 holes for bolting to the next panel

Ref
079800 ○

Estate Railing Gates

Manufactured from the same high quality materials and with all the same benefits as the Estate Railings, this elegant gate is ideal for use with railings or in the place of any metal field gate. The graceful crook with the diagonal strengthening brace adds an attractive feature.

Any metal field gate clad with mesh should be hung on 114mm diameter posts.

Estate Gates

Galvanised as standard powder coating available as an option - please ask.

Ref

- 1.2m wide 079400BM ○
- 3.0m wide 079500BM ○
- 3.6m wide 079600BM ○



Post & Rail

Special Heavy Morticed

Special Heavy Morticed Post & Rail Fencing
This attractive design will appeal to those who want a timeless traditional or agricultural style to their fence. This fencing consists of half round posts, with either three or four mortices depending on the height for the irregular sawn horizontal rails to be inserted.

Allow one post for every 1.85m of fence, plus one for the end of the run.

For a 3-rail fence allow three rails per 1.85m and for a 4-rail fence, also allow four rails per 1.85m. All timber used throughout is superior quality Jakcure® treated softwood guaranteed for 25 years. The posts have a galvanised gangnail embedded in top to reduce splitting.

Posts
Peeled half round softwood Jakcure® treated with a minimum of 125mm across the face. (Mortices 100 x 40mm are centred at 125mm, 500mm, 850mm, 1150mm from the top of the post).

Corner Posts
Peeled round, softwood Jakcure® treated with a minimum diameter of 125mm. Morticed two ways. (Mortices 100 x 40mm are centred at 125mm, 500mm, 850mm, 1150mm from the top of the post).

Handy Hint:

After dividing the length of the fence run by the post intervals, always add one extra post to complete the run. Remember, corner posts take the place of ordinary posts. Aids for erecting posts - Shuv-holer and Monkey Hole Borer - see page 155.

Length		Ref
1.8m	3 Mortices	150400 ■
2.3m	4 Mortices	150600 ○

Rails
Irregular sawn sections of softwood Jakcure® with a minimum girth of 250mm peeled, with ends tapered to fit mortices.
2.0m approx. (Untrimmed) 150520 ■

Length		Ref
1.8m	3 Mortices	150900 ■
2.3m	4 Mortices	151000 ○

Nails
50mm stainless steel nails 2kgs. for 180m of 3-rail fence. 3kgs for 180m of 4-rail fence.
See page 153



Sawn square posts with half round rail.



Post and rail nailed (half round)



Sawn square post and rail.

For Arenas

Containing Boards

4.0m - 150 x 38mm

170410 ●

3.6m - 100 x 38mm

170400 ●

Splash Boards

3.6m - 150 x 25mm

170800 ●

Jumping Poles (not for in-ground use)

3.6m long x 100mm diameter

131800 ●

Square Rails Sawn finish.

3.6m - 100 x 38mm section

170200 ●

4m - 100 x 38mm

170210 ■

Jakcure® End Grain Treatment

Where cutting or drilling after treatment cannot be avoided use Jakcure® End Grain Treatment to ensure no timber is left untreated. 131212 ●

Handy Hint:

After dividing the length of the fence run by the post intervals, always add one extra post to complete the run. Remember, corner posts take the place of ordinary posts. Aids for erecting posts - Shuv-holer and Monkey Hole Borer - see page 155.

Post & Rail Nailed - Sawn Square or Half Round



Standard Post & Rail Fencing (nailed)

This traditional versatile fencing consists of machine rounded half round posts, with three horizontal machine rounded half round rails, nailed to the flat face of the posts. Allow one post for every 1.8m of fence, plus one for the end of the run. Allow three rails for every 3.6m of 3-rail fencing.

All timber used throughout is superior quality Jakcure® treated softwood guaranteed for 25 years.

Recommendation

When erecting post and rail fencing in the Summer it is advisable to set posts in concrete as it is very difficult or impossible to ram dry soil tight.

Machine rounded, half-round Posts

Half round and pointed

1.8m 115mm face

130400 ●

1.8m 125mm face

150110 ●

2.4m 125mm face

131300 ●

Corner Posts

Jakcure® softwood with two sawn flat sides from round post of 125mm diameter.

Machine rounded

1.8m

130550 ●

2.4m

130600 ○

(2.4m posts are recommended for use in soft ground or a 1.5m high fence).

Post & Rail Fencing (nailed)

This sturdy fencing consists of sawn square section posts, with three horizontal rails, nailed to the posts. There is a choice of either half round rails or sawn square section rails.

Allow one post for every 1.8m of fence, plus one for the end of the run. Allow three rails for every 3.6m of 3-rail fencing.

Posts

125mm x 75mm section, weathered one way. Sawn finish. For corners use ordinary posts.

Length

1.8m

Ref

170100 ●

2.1m

170500 ●

2.4m

170600 ■

For more information about 100mm nails see page 151

Square Rails

100 x 38mm section. Sawn finish.

3.6m long

170200 ●

4m long

170210 ■

Half Round Rails

Machine rounded Jakcured as inset above. Half round.

3.6m long with

135000 ●

100mm face

● STOCK ITEMS ○ MADE TO ORDER (CANNOT BE CANCELLED ONCE ORDERED) ■ CHECK FOR AVAILABILITY



Post & Rail Morticed



Post and Rail Fencing (Morticed)

This attractive fencing consists of sawn square section posts, with three or four horizontal square section rails, morticed into the posts. There are additional prick posts in between the posts at the mid bay point to give extra support.

Allow one post and one prick post for every 2.85m of fence, plus one post for the end of the run. Allow three rails per 2.85m run of 3-rail fence, and four rails per 2.85m of 4-rail fence.

All timber used throughout is superior quality Jakcure® treated softwood guaranteed for 25 years. The morticed posts have a galvanised gangnail embedded in the top to reduce splitting of the timber.

All fixings are heavily galvanised.

Posts

125mm x 75mm section, weathered one way. Mortices 100 x 40mm centred at 150mm, 530mm, 885mm and 1190mm from top of post. Sawn finish.

Length

1.8m 3 Mortices
2.1m 4 Mortices

Ref

190200 ●
190700 ○

Square Rails

100 x 38mm section, scarfed at both ends.

Length

3.0m

Ref

190300 ●

Corner Posts

125 x 125mm section, weathered two ways. Sawn finish.

1.8m 3 Mortices
2.1m 4 Mortices

190600 ●
190800 ○

Prick Posts

100 x 38mm section, pointed. Sawn finish.

1.5m long
1.8m long

190400 ●
190900 ○

Nails

100mm galvanised wire nails allow 11kgs for 200m of 3-rail fence and 14kgs for 200m of 4-rail fence.

See page 153.



Chain Mesh Fence

For absolute economy and horse security this fence is highly recommended. It comprises half round vertical posts, machine rounded and pointed. One half round horizontal rail at the top of the fence and galvanised chain link below.

Allow one post for every 1.8m of fence plus one for the end of the run. Allow one top rail per 3.6m of fence and one 25m roll of 0.9m chain link per 25m run.

Posts

Half round softwood, machine rounded and pointed 125mm across the face.	Length 1.8m	Ref 150110 ●
---	----------------	-----------------

Corner Posts

Two sawn flat sides from round posts of 125mm diameter.	1.8m	130550 ●
---	------	----------

Half Round Rails

Half round, machine rounded 100mm across face.	3.6m	135000 ●
--	------	----------

Chain link

50mm mesh conforms to B.S. 1722 Part 1, galvanising conforms to BS EN 10224, wire used is to BS EN 10233. Line wire is supplied with each roll. Supplied in 25m rolls, height 0.9m, 2.5mm gauge.		300100 ●
--	--	----------

- All timber used throughout is superior quality Jakcured softwood guaranteed for 25 years
- Specially designed with horse safety in mind
- Galvanised mesh for longer life
- Smaller holes in mesh to stop horses feet becoming caught in wire and causing injuries
- Superb value

Staples / Nails

We suggest you use galvanised (barbed) staples 30mm x 3.15mm which would require 3kg. per 200m. & 100mm galvanised wire nails 4kg. galvanised ring clips - sufficient for 200m. See page 153.



Image shown with two rows of additional barbed wire



Fencing Stakes & Posts

This is a versatile and hard wearing general purpose fence suitable for a multitude of agricultural situations. With Jakcured stakes and galvanised wire it's long lasting too. All timber used throughout is superior quality Jakcure® treated softwood guaranteed for 25 years.

Stakes

Softwood mixed cleft & round 75 -100mm across or through the butts, peeled, pointed.

Length	Ref
1.65m	090400 ●
1.8m	090500 ●

Machine Rounded Fencing Stakes, Pointed, with chamfered tops.

75mm dia.	
1.5m long	091800 ●
1.65m long	091900 ●
1.8m long	092000 ●
90mm dia.	
1.65m long	093200 ●
1.8m long	093300 ●

Anchor Stakes

Half round with a minimum of 75mm face, peeled to act as a thrust plate for the struts

750-900mm	090900 ●
-----------	----------

Straining and Corner Posts

Round and peeled. Diameter measurement is approximate through the butt

2.3m long x dia. 150mm	090600 ●
2.7m long x dia. 150mm	091500 ●

Machine rounded, with chamfered tops.
2.1m long x dia. 150mm pointed 093050 ●
2.4m long x dia. 150mm pointed 093055 ●

Straining Posts and struts should be installed at a maximum of every 50m and at all changes of direction and significant changes of level.

Intermediate posts for mild steel fencing at 3.5m centres for sheep or 2.7m for cattle

Struts

Machine Rounded
Minimum diameter of 60mm Jakcured.

1.8m	114900 ●
2.4m	115100 ●



For Stock (or cattle) fence.

Jacksons also supply Wire Fencing, Wire netting, Wire, Barbed Wire.

Staples and galvanised straining Eye Bolts and tools page 129.

● STOCK ITEMS ■ CHECK FOR AVAILABILITY

Hexagonal Wire Netting

Height in millimeters						
Mesh	Wire Gauge	600 Ref	900 Ref	1050 Ref	1200 Ref	1800 Ref
50 metre rolls						
25mm	20		193100 ●		193300 ●	193400 ●
31mm	19	193900 ●		194100 ●	194200 ●	
	18			194600	194700	
50mm	19	195700 ●	195900 ●		196000 ●	196200 ●

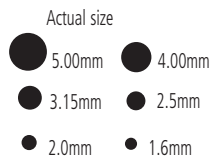
Suggestions for use:

25mm: plastering and floor screeding; chicken runs.

31mm: protection against the smallest rabbits.

50mm: poultry; general purpose.

Plain Wire Mild steel galvanised



Size	Approx Length	Ref	Length	Gauge	Ref
25kg coils					
5.00mm (6g.)	162m	321000 ■	200m	2.5mm	321600 ●
4.00mm (8g.)	254m	321100 ●			
3.15mm (10g.)	410m	321200 ●	200m	1.6mm high tensile	321660 ●
2.5mm (12g.)	651m	321300 ●			
2.0mm (14g.)	1017m	321400 ●			
1.6mm (16g.)	1590m	321700 ■			

Size	Approx Length	Ref
5kg coils		
3.15mm (10g.)	82m	323100 ●
2.50mm(12g.)	130m	323200 ●
2.00mm(14g.)	203m	323300 ●

Barbed Wire

Our galvanised double strand barbed wire available in 200m with barbs at 100mm centres.



Barbed wire reels



12"		
230		9"
200		8"
180		7"
150		6"
140		5½"
130		5
115		4½"

6"		
150		6"
140		5½"
130		5"
115		4½"
100		4
90		3½"
75		3

12"		
230		9"
200		8"
180		7"
150		6"
140		5½"

6"		
230		9"
200		8"
180		7"
150		6"
140		5½"
130		5

6"		
260		10½"
220		8½"
220		8½"
200		8"
180		7"
150		6"
140		5½"
130		5
115		4½"
100		4"
80		3½"
80		3½"

● STOCK ITEMS ■ CHECK FOR AVAILABILITY

Galvanised Stock Fencing manufactured to BS EN 10223

1 Cattle or Stock Fence 1.15m (Galfan coated)
Available in medium weight. Eight line wires and uprights 300mm apart.

Type	Ref	Wire diameter Top & Bottom	Wire diameter Intermediate
C8/11/30	320200 ●	3.0mm	2.5mm (50m rolls)

2 Pig Fence 800mm (Galfan coated)
Eight line wires and uprights 150mm apart (also lamb proof).

	Ref	Wire diameter	Wire diameter
Medium C8/80/15	320400 ●	3.0mm	2.5mm (50m rolls)
* High Tensile HT8/80/15	320440 ●		all wires 2.5mm (100m rolls)

3 Sheep Fence 900mm (Galfan coated)
Six line wires & uprights 300mm apart.

Heavy B6/90/30	320700	4.0mm	3mm (50m rolls)
Medium C6/90/30	320800 ●	3.0mm	2.5mm (50m rolls)

4 Forest Fence 1.0m (Galfan coated)
Seven line wires, uprights 150mm apart.

Medium C7/10/15	325500 ●	3.0mm	2.5mm (50m rolls)
-----------------	----------	-------	-------------------

5 Jacksons Galvanised Deer Fence
Deer Fence 1.9m
High Tensile (100m rolls) Vertical wires 150mm apart for perimeter fencing.

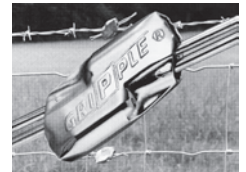
* High Tensile 13/190/15 325600 ● 2.5mm 2.5mm (close uprights)

* High Tensile Fence allows the posts to be further apart

- Galvanised wire field fences that are strong, durable & economical
- Wire fencing types 1-4 are coated with Galfan, highly corrosion resistant zinc and aluminium alloy - Laboratory tests have shown these to last twice as long as ordinary galvanised wires
- Supplied in 50m as standard or 100m rolls for high tensile



Gripper Wire Tensioning Tool



Gripper Wire Joiners

Gripplers

Gripper Wire Tensioning Tool

326900 ●

Gripper Wire Joiner

Ideal for joining both Mild & High Tensile steel wire 1.6mm-3.2mm & High Tensile barbed wire.

326800 ●

Gripper for mild steel barbed wire.

326880 ●



Tree and Netting Stakes

Jakcured tree stakes are machine rounded in two sizes 60 & 75mm diameter, and are available in lengths of up to 3 metres.

A minimum of 22.3kg/m³ of preservative is used because of presence in the soil of fertilisers and dressings used in the modern orchard.

The Jakcure treatment process meets fruit growers' specifications, and the depth of penetration makes the timber last longer, meaning stronger stakes that will give the best support.

All timber is Jakcure® softwood guaranteed for 25 years.

When it's time to overhaul orchards, and replace any worn or rotten tree stakes, replacing them all with Jacksons' stakes will mean that you will have good strong stakes that will stay standing for longer, and this means you'll save money by not having to replace them as soon as ordinary non Jakcure® stakes, our stakes are guaranteed for 25 years!



Avoid this happening to your trees.

60mm Diameter

Length	Ref
1.5m	113500 ■
1.8m	114400 ●
2.1m	115200 ■
2.4m	114500 ●

75mm Diameter
pointed and chamfered

Length	Ref
2.1m	092100 ●
2.4m	092200 ●
2.7m	092300 ●

Buckle Tree Ties

Length	Ref
450mm	100900 ●



Best galvanized 2mm wire strands
used to assemble chestnut fencing

Cleft Chestnut Fencing

*Please note this chestnut fencing is not Jakcure® timber as chestnut is a hardwood and cannot be treated.

A simple, fast and cost-effective demarcation solution our cleft chestnut fencing is assembled using best quality galvanised 14 gauge (2mm) wire with 4 strands per row. Pales are cleft, peeled and pointed at one end.

Approximate spacing: 75 pales in a 9.1m roll.

We recommend installation with our machine round Jakcure® posts for long life.



Style A (2 rows of wire)



Style B (3 rows of wire)

Fence Height	Ref
0.9m	291000 ●
1.1m	291600 ●
Style 'A' 9.1m rolls	
0.9m	294000 ■
1.1m	294600 ●
Style 'B' 9.1m rolls	
0.9m	294000 ■
1.1m	294600 ●
Style 'B' 4.55m rolls	
1.2m	295500 ●
1.4m	295800 ●
1.5m	296400 ●
1.8m	297000 ■

Corner and End Posts (not chestnut)

Machine rounded 100mm diam. Use at maximum 45m. intervals or corners and changes in direction.

0.9m & 1.1m	1.5m	132100 ●
1.2m & 1.4m	1.8m	132200 ●
1.5m	2.1m	132220 ●
1.8m	2.4m	132300 ●

Intermediate Posts (not chestnut)

Machine round 75mm diameter use at 2.7m intervals

Fence Height	Post Length	Ref
0.9m	1.5m	091800 ●
1.1m	1.5m	091800 ●
1.2m	1.65m	091900 ●
1.4m	1.8m	092000 ●
1.5m	2.1m	092100 ●
1.8m	2.4m	092200 ●

Struts (not chestnut)

Machine rounded. 60mm diam. Use one on end posts and two on corner and intermediate straining posts.

0.9m & 1.1m	1.4m	114700 ■
1.2m & 1.4m	1.8m	114900 ●
1.5m	2.1m	115000 ■
1.8m	2.4m	115100 ■

Anchor Stakes (not chestnut)

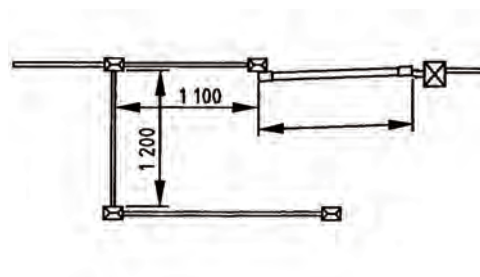
Half round with minimum of 75mm face, pointed and peeled. One per strut 750 -900mm 090900 ■



Mobility Timber Kissing Gate (wheelchair friendly)

The Mobility Kissing Gate uses the same materials as the standard Timber Kissing Gate, but with a 1.5m gate, which makes it accessible for wheelchair users.

Designed in accordance with BS 5709:2006

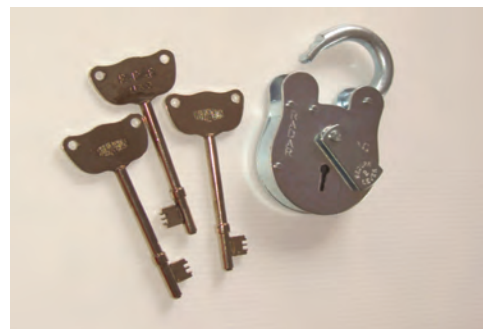


Mobility timber Kissing gate complete set

Ref
299800BM ■

RADAR Padlock

Rights of way gates can be secured in the closed position with a padlockable drop bolt, this can be used with a RADAR padlock.



RADAR padlock and three keys

Ref
284550BM ■



Timber Kissing Gate

This style of gate has been commonplace in rural areas for years. They are particularly useful in districts populated by elderly people, where a stile is unsuitable. The kissing gate allows easy access through fences with no climbing necessary.

Specification

The set consists of one 1.05m wide, five bar, Jakcure® Uni- Field Gate. Hung on galvanised double band hinges with adjustable bottom eye. The hanging post is 2.1m long x 125 x 100mm section, shaped four ways. The two slam posts are 1.8m long x 125 x 100mm section. The 'V' shaped enclosure fence has four rails of 100 x 38mm section morticed into each side of the corner post, which is also 1.8m long x 125 x 100mm section. All manufactured from Jakcure® softwood. We recommend that all posts should be set in concrete. This unit is suitable for inserting in any type of fence in almost any situation.

Standard timber Kissing Gate complete set Ref
299900BM ■

Sag Hook 271600

Jacksons Galvanised Metal Kissing Gate

This popular self closing six rail Kissing gate is now available manufactured from hot dip galvanised metal, so it will resist rusting for many years and will be virtually maintenance free once installed.

Specification

Dimensions: 1520mm wide, 1170mm high. Manufactured from 25 x 25mm RHS with four posts 50 x 50mm RHS including adjustable bottom hinge which allows the gate to swing shut either way. Supplied in three sections plus posts and location bars for below ground. All hot dipped galvanised.

We recommend that the posts should be set in concrete. This unit is suitable for inserting in any type of fence in almost any situation.

Metal Kissing gate complete set 264600BM ○



○ MADE TO ORDER (CANNOT BE CANCELLED ONCE ORDERED) ■ CHECK FOR AVAILABILITY



Stile with Dog Gate (Rabbit Proof)
Jacksons stiles were designed with walkers and the outdoor enthusiast in mind. No more lifting the dog over and getting covered in mud. Now all you need to do is pull up the handle and a dog sized gap appears. Far easier all round. No need to worry if your stile is in a rabbit proofed fence, we have added a solid bottom to fill the gap so the rabbits can't get through.

Specification (with dog gate)
3 x 1.8m long x 125 x 75mm posts morticed to take 4 rails. The post length allows for 525mm to be set in the ground. 4 rails 1150mm long, 100 x 38mm section. The two treads are 1.2m x 175 x 50mm section, supported by two 1.35m x 125 x 38mm and two 1.05m x 125 x 38mm tread posts.
The dog gate has a top rail for nailing between the posts, with holes to support the handle attached to the plywood gate, which is contained within the slides. All manufactured from Jakcure treated softwood. We recommend that all posts are set in concrete. This unit is suitable for inserting in any type of fence in almost any situation.



Stile Complete With Dog Gate Ref
Stile (without dog gate) 201700BM ○
Dog gate for attaching to existing stile 200700BM ■
201800BM ○

Two Way R.O.W. Latch
Two way latch especially suitable for self closing gates where disabled people need to gain access.
Supplied complete with latch timber packer and activating pin. 271100 ■



Bridle Gates
1 x 1.8m wide Universal Gate, 1.3m high overall 2 x 2.1m hanging posts 150 x 150mm, sawn finish 1 x Hinge set with adjustable bottom hinge 1 x Spring catch set galvanised Fitting irons to gate. When ordering please state either right or left hand hanging. 299770BM ■



Knee / Diamond Rail Fencing
Posts (for Diamond Rail fencing) With birds mouth top, 100 x 100mm section, softwood planed finish. Galvanised strap to be formed on site and secured to post with 50mm nails (see page 151).

Posts (for Diamond Rail fencing)	Ref
0.9m long	200900 ■
1.2m long	201000 ■
Rails (for Diamond Rail fencing)	
70x70mm nominal section 2.7m (posts at 1.35m centres)	640600 ●
70x70mm nominal section 1.8m (posts at 1.8m centres)	640300 ●
Galvanised Strap for Diamond Rail	201100 ●



Post and Chain Fencing
Posts for Chain Fencing Jakcured Softwood 100mm square section, planed shaped top 1.5m
Chain galvanised 50mm x 6mm links spikes in every other link. Price per metre
Hooks galvanised for attaching chain to wooden posts (including screws)
350900 ■
350600 ●
350700 ●



Silver Rail fencing
Posts are 125 x 75mm section Jakcured soft wood with rounded tops. Allow 1 post per 2m .Rails can be supplied coloured. Price on application.

Intermediate Post 1.5m	201200 ■
Corner Posts 1.5m	201300 ○
End Post 1.5m	201500 ■
Rails 6m Galvanised rail (41.5mm diam. inc. connector)	064000BM ●