
LPCB LPS 1175

APPROVED PRODUCTS

LPCB LPS 1175 covers physical security products and services, and comprises of a number of security ratings from A1 to H20, formally known as SR1 - SR8.

The ratings are measured in terms of attack tool and time available to the attacker and enables specifiers to select products according to the risks that the project might face. The LPS 1175 standard can be used in a range of applications from residential through to critical infrastructure projects.

A1 (SR1) & B3 (SR2)

Products provide the minimum levels of recognised resistance to opportunist attempts at forced entry using a range of techniques including those that create noise.

C5 (SR3)

Products provide moderate resistance to determined attempts of forced entry using a range of techniques, including those that involve creation of noise.

D10 (SR4) & E10 (SR5)

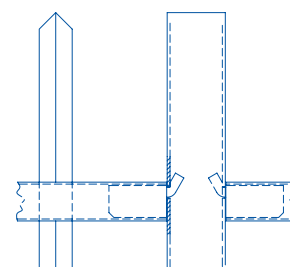
Products resist experienced attempts at forced entry using a wide range of tools including battery powered tools lasting up to 10 minutes depending on the security rating sought.

BARBICAN® SR1 (A1)



Our Barbican® SR1 (A1) LPS 1175 systems feature a welded pale-through-rail construction for strength and security integrity. Barbican® SR1 is an ideal option for commercial properties, city schools, or great for architects who want a minimalist contemporary fence which meets LPS 1175 standard set by the Loss Prevention Certification Board (LPCB).

- Fully welded pale-through-rail construction
- Seamless, concealed vandal proof rail to post fixing
- Anti-climb and anti-scale design
- 25-year service life guarantee



Post to panel fixings

APPLICATIONS

- ▶ Schools
- ▶ Perimeter security
- ▶ Commercial premises

PANELS

Barbican® SR1 panels are up to 3000mm high and have two horizontal hollow section rails 60 x 40mm (3 rails if 3000mm high). Vertical rectangular hollow section 25 x 25mm pales are passed through the rails with standard spacing at 129mm centres. The tops of pales are cut at 45 degrees and left open as standard to form a point.

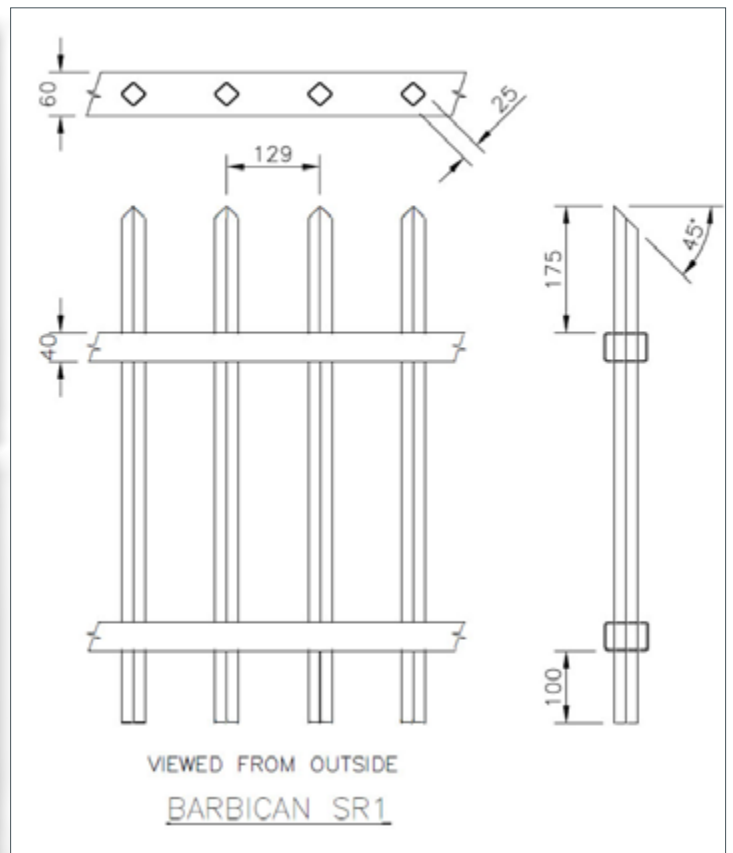
GATES

A1 (SR1) gates available

APPROVALS

LPS 1175 A1 (SR1)





HEIGHT (mm)	POST CENTRES (mm)	POST DIMENSIONS (mm)	OVERALL POST LENGTH (mm)
1800	3000	60 x 60	2500
2000	3000	60 x 60	2800
2500	3000	80 x 60	3300
3000	2484	80 x 60	3800

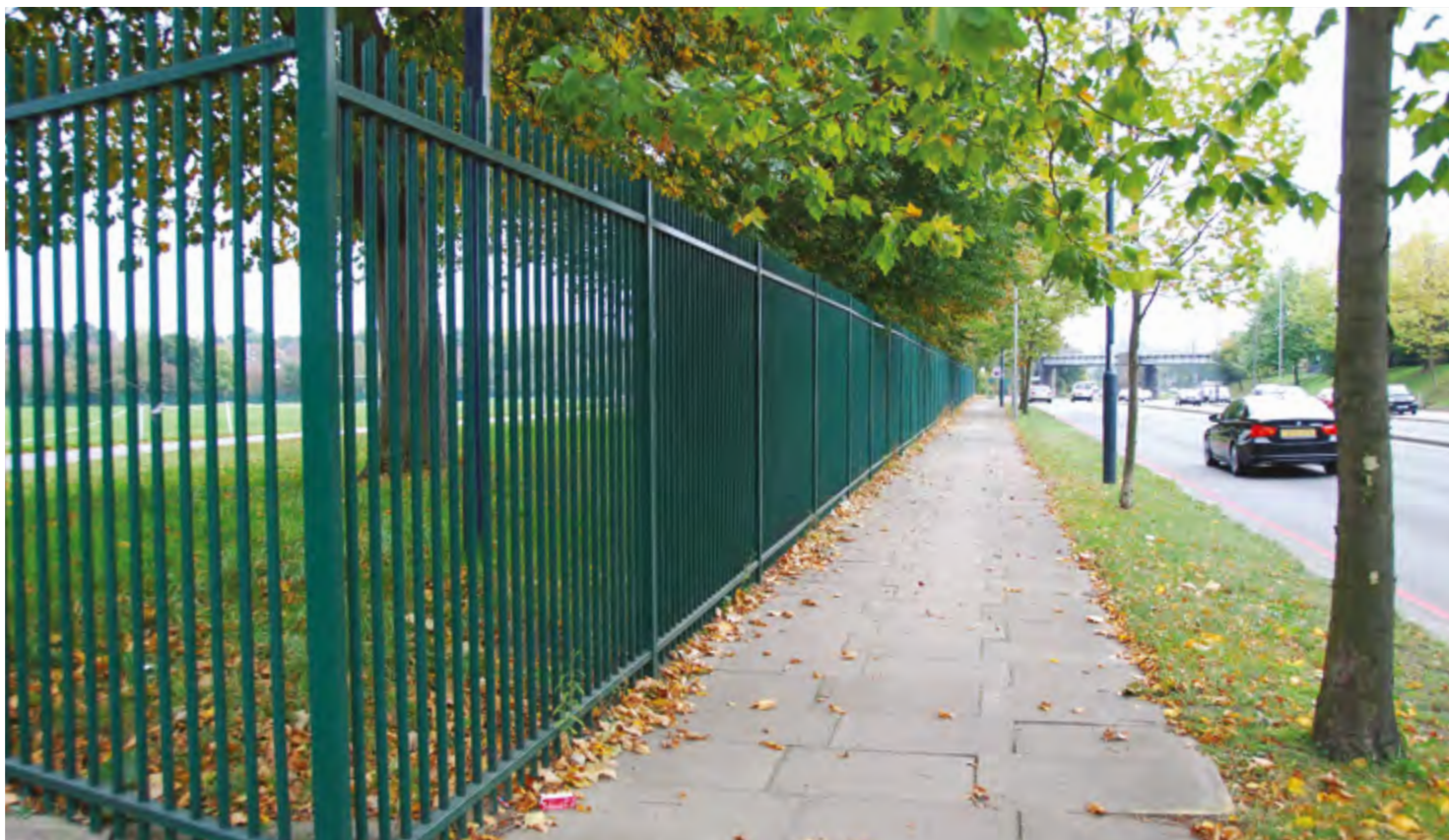
FINISHES

- Hot dip galvanised to BS EN 1461 as standard
- Hot dip galvanised and powder coated to BS EN 13438 in Black RAL 9005 or Green RAL 6005
- Other colours available on request
- Marine coat for installations within 500m of salt water or estuary

POST OPTIONS

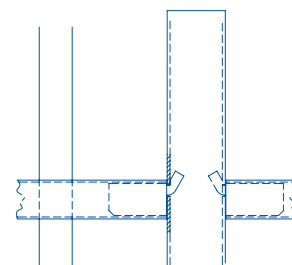
- Overlength set in concrete as standard
- Baseplated to bolt down onto concrete

BARBICAN IMPERIAL® SR1 (A1)



Barbian Imperial® LPS 1175 SR1 (A1) system of fencing and gates features a welded pale-through-rail construction for strength and security integrity. The horizontal railed are sleeved on to the upright posts with concealed fixings to provide timeless design suited to commercial properties, schools or applications where a contemporary fence meeting with a recognised security rating is specified.

- Fully welded pale-through-rail construction
- Seamless, concealed vandal proof rail to post fixing
- Anti-climb and anti-scale
- 25-year service life guarantee



Post to panel fixings

APPLICATIONS

- ▶ Medium risk
- ▶ Schools
- ▶ Retail
- ▶ Public spaces

PANELS

Barbian Imperial® SR1 has vertical round hollow section \varnothing 32mm diameter pales up to 2000mm high at 129mm centres and 32mm for 2100mm+ with 129mm centres.

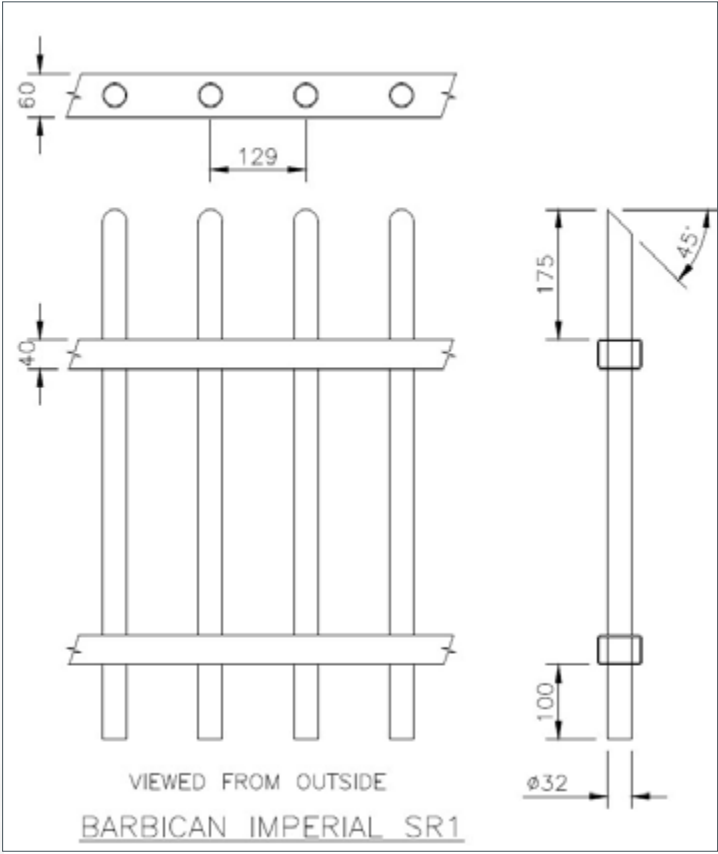
GATES

A1 (SR1) gates available

APPROVALS

LPS 1175 A1 (SR1)





HEIGHT (mm)	POST CENTRES (mm)	POST DIMENSIONS (mm)	OVERALL POST LENGTH (mm)
1800	3000	80 x 60	2500
2000	3000	80 x 60	2800
2500	3000	80 x 60	3300
3000	2484	80 x 60	3800

FINISHES

- Hot dip galvanised to BS EN 1461 as standard
- Hot dip galvanised and powder coated to BS EN 13438 in Black RAL 9005 or Green RAL 6005
- Other colours available on request
- Marine coat for installations within 500m of salt water or estuary

POST OPTIONS

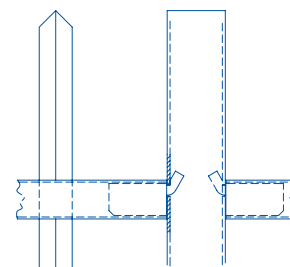
- Overlength set in concrete as standard
- Baseplated to bolt down onto concrete

BARBICAN® EXTRA SR1 (A1)



Barbican® Extra 1175 SR1 (A1) features a welded pale-through-rail construction for strength and security integrity and additional pales through the top rail, making it difficult to scale over. It is ideally suited to commercial properties, schools or applications where a fence meeting with a recognised security rating with enhanced protection against climbing or scaling is specified.

- Fully welded pale-through-rail construction with additional pales through the top rail
- Seamless, concealed vandal proof rail to post fixing
- Anti-climb design and anti-scale design
- 25-year service life guarantee



Post to panel fixings

APPLICATIONS

- ▶ Medium risk
- ▶ Transport
- ▶ Public spaces

PANELS

Barbican® Extra A1 panels are up to 3000mm high and have two horizontal hollow section rails 60 x 40mm (3 rails if 3000mm high). Vertical rectangular hollow section 25 x 25mm pales are passed through the rails with standard spacing at 129mm centres, with additional pales through top rail and between each full pale.

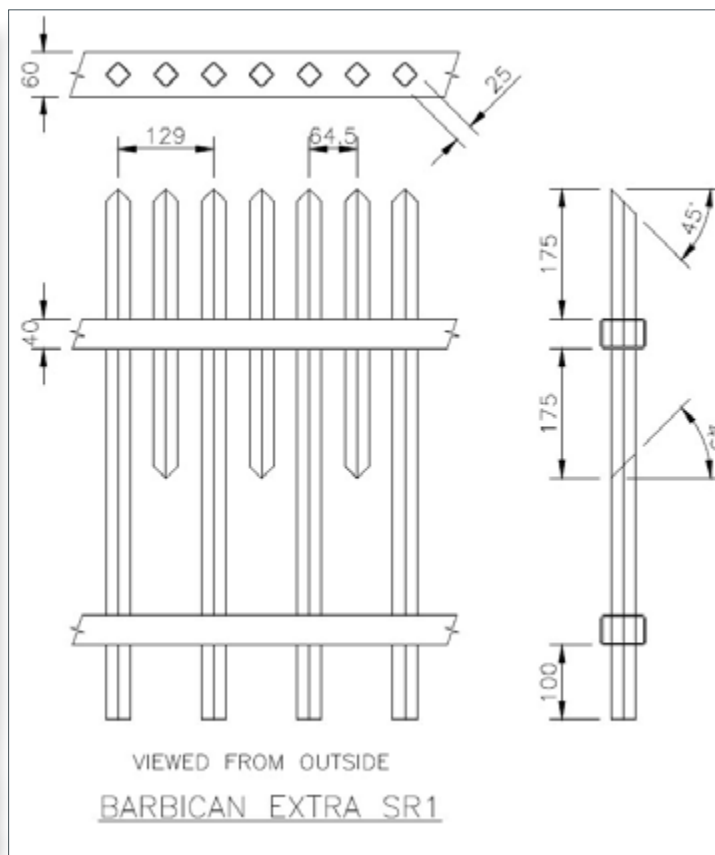
GATES

A1 gates available.

APPROVALS

LPS 1175 A1 (SR1)





HEIGHT (mm)	POST CENTRES (mm)	POST DIMENSIONS (mm)	OVERALL POST LENGTH (mm)
1800	3000	60 x 60	2500
2000	3000	80 x 60	2800
2500	3000	80 x 60	3300
3000	2484	80 x 60	3800

FINISHES

- Hot dip galvanised to BS EN 1461 as standard
- Hot dip galvanised and powder coated to BS EN 13438 in Black RAL 9005 or Green RAL 6005
- Other colours available on request
- Marine coat for installations within 500m of salt water or estuary

POST OPTIONS

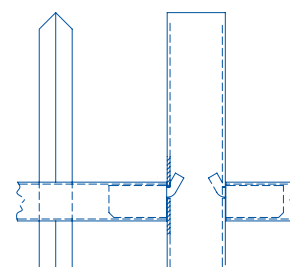
- Overlength set in concrete as standard
- Baseplated to bolt down onto concrete

BARBICAN® WITH FINIALS SR1 (A1)



Barbican® with Finials SR1 (A1) mimics traditional steel railing designs and features a welded-pale-through-rail design which means there are no rivets to be forced or pales that can be easily removed. The horizontal rails are sleeved on to the upright post with concealed fixings to provide a seamless design that is both stylish and strong.

- Fully welded pale-through-rail construction with additional pales through the top rail
- Seamless, concealed vandal proof rail to post fixing
- Anti-climb design and anti-scale design
- 25-year service life guarantee



Post to panel fixings

POST OPTIONS

- Overlength set in concrete as standard
- Baseplated to bolt down onto concrete

PANELS

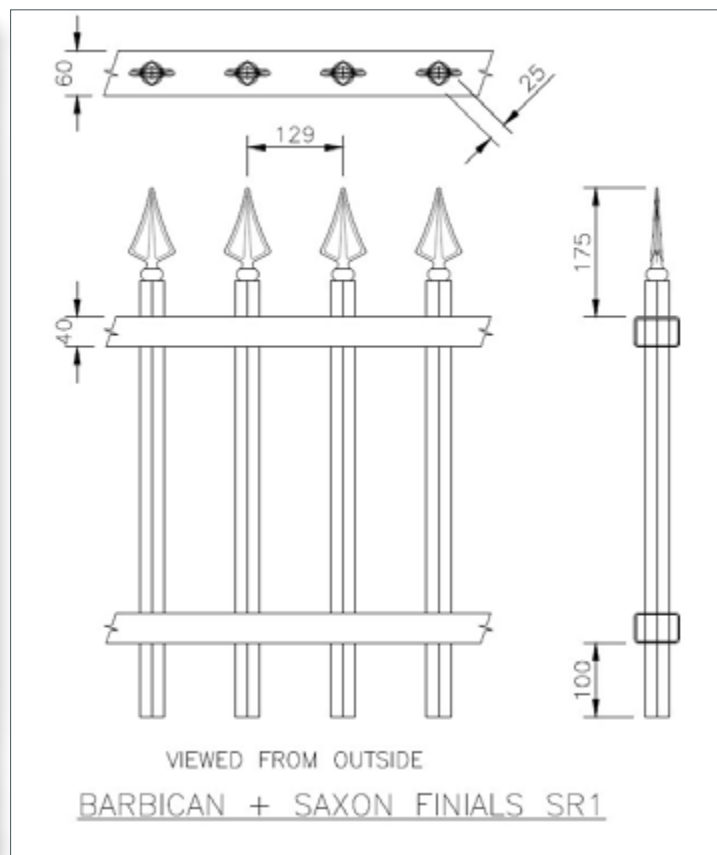
Barbican® with Finials A1 panels are up to 3000mm high and have two horizontal hollow sections rails 60 x 40mm (3 rails if 3000mm high). Vertical rectangular hollow section 25 x 25mm pales are passed through the rails with standard spacing at 129mm centres. The tops of pales are welded Saxon finials for additional security.

GATES

A1 (SR1) gates available

FINIAL





HEIGHT (mm)	POST CENTRES (mm)	POST DIMENSIONS (mm)	OVERALL POST LENGTH (mm)
1800	3000	60 x 60	2500
2000	3000	60 x 60	2800
2500	3000	80 x 60	3300
3000	2484	80 x 60	3800

FINISHES

- Hot dip galvanised to BS EN 1461 as standard
- Hot dip galvanised and powder coated to BS EN 13438 in Black RAL 9005 or Green RAL 6005
- Other colours available on request
- Marine coat for installations within 500m of salt water or estuary

APPROVALS

LPS 1175 A1 (SR1)

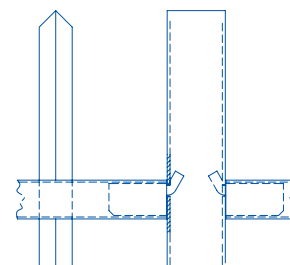


BARBICAN® BARBED TOP SR1 (A1)



Barbican® Barbed Top SR1 fencing features a welded pale-through-rail construction with barbs/spikes welded to the top of each pale to underline its presence and act as a deterrent to climbing and scaling over.

- Fully welded pale-through-rail construction with additional pales through the top rail
- Seamless, concealed vandal proof rail to post fixing
- Anti-climb design and anti-scale design
- 25-year service life guarantee



Post to panel fixings

APPLICATIONS

- ▶ Medium risk
- ▶ Utilities
- ▶ Construction sites

PANELS

Barbican® Barbed Top A1 panels are up to 3000mm high and have two horizontal hollow section rails 60 x 40mm (3 rails if 3000mm high). Vertical rectangular hollow section 25 x 25mm pales are passed through the rails with standard spacing at 129mm centres, which has a 10mm round pointed bar added to each pale.

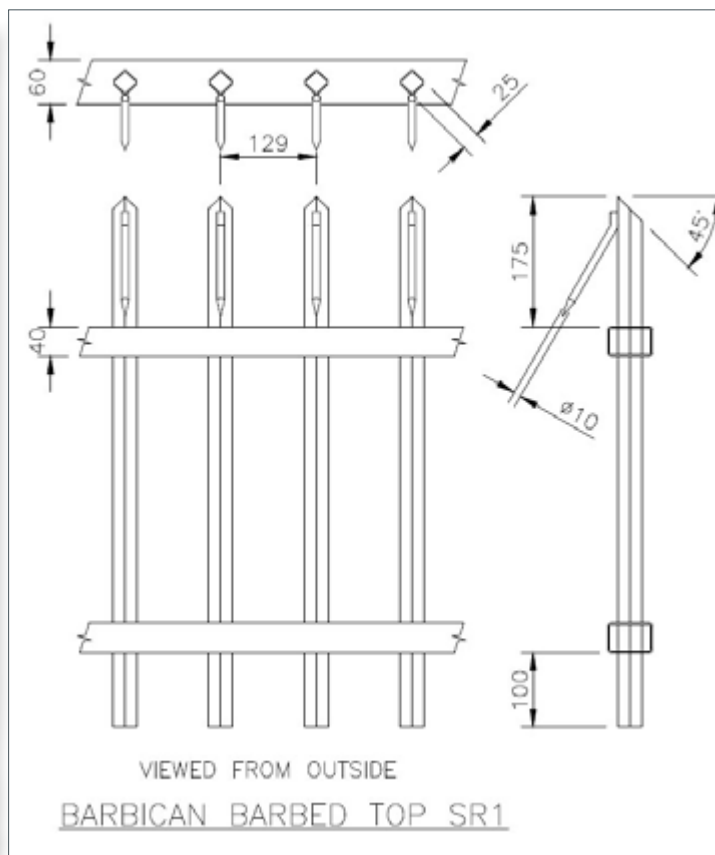
GATES

A1 (SR1) gates available

APPROVALS

LPS 1175 A1 (SR1)





HEIGHT (mm)	POST CENTRES (mm)	POST DIMENSIONS (mm)	OVERALL POST LENGTH (mm)
1800	3000	60 x 60	2500
2000	3000	60 x 60	2800
2500	3000	80 x 60	3300
3000	2484	80 x 60	3800

FINISHES

- Hot dip galvanised to BS EN 1461 as standard
- Hot dip galvanised and powder coated to BS EN 13438 in Black RAL 9005 or Green RAL 6005
- Other colours available on request
- Marine coat for installations within 500m of salt water or estuary

POST OPTIONS

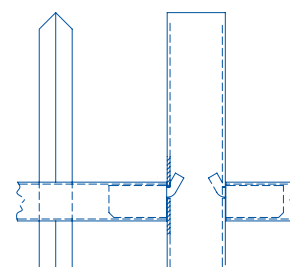
- Overlength set in concrete as standard
- Baseplated to bolt down onto concrete

BARBICAN® DEFENDER XTREME SR1 (A1)



Barbican Defender® Xtreme SR1 projects a powerful visual statement in perimeter protection with a clear anti climb design. The security fence has curved square bar pales which are designed to prevent intruders from climbing or scaling the fence, whichever side it is approached.

- Fully welded pale-through-rail construction with additional pales through the top rail
- Seamless, concealed vandal proof rail to post fixing
- Anti-climb design and anti-scale design
- 25-year service life guarantee



Post to panel fixings

APPLICATIONS

- ▶ High risk
- ▶ Commercial premises
- ▶ Utilities sites

PANELS

Constructed as per Barbican® panels but pales are extended and cranked 320mm from the top rail, with each one cut at 45 degrees to form a point.

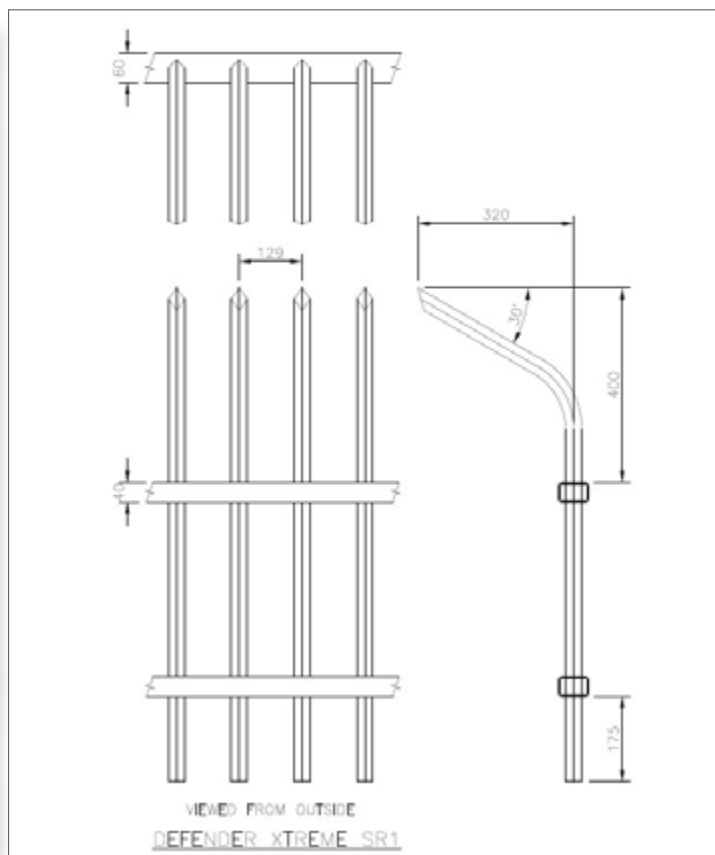
GATES

A1 (SR1) gates available

APPROVALS

LPS 1175 A1 (SR1)





HEIGHT (mm)	POST CENTRES (mm)	POST DIMENSIONS (mm)	OVERALL POST LENGTH (mm)
2250	2484	60 x 60	3050
2500	2484	80 x 60	3300
3000	2484	80 x 60	3800

FINISHES

- Hot dip galvanised to BS EN 1461 as standard
- Hot dip galvanised and powder coated to BS EN 13438 in Black RAL 9005 or Green RAL 6005
- Other colours available on request
- Marine coat for installations within 500m of salt water or estuary

POST OPTIONS

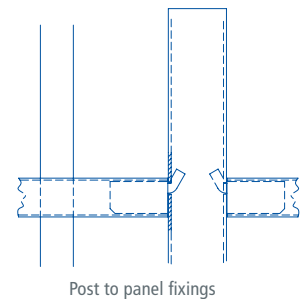
- Overlength set in concrete as standard
- Baseplated to bolt down onto concrete

SENTRY® SR1 (A1)



Sentry® SR1 (A1) is a security rated vertical bar stopped pale-through-rail solution with a flat top rail, with an option for an integrated 25mm high security comb. Its simple design is equally suited for contemporary and traditional settings.

- Fully welded pale-through-rail construction
- Seamless, concealed vandal proof rail to post fixing
- Anti-climb design and anti-scale design
- Optional double row of 25mm high sharp-pointed steel double comb for additional security
- 25-year service life guarantee



Post to panel fixings

APPLICATIONS

- ▶ Medium risk
- ▶ Perimeters
- ▶ Commercial premises

PANELS

Sentry® A1 panels up to 3000mm high have two horizontal rectangular hollow section rails 60 x 40mm (3 rails if 3000mm high); Vertical round hollow section 32mm pales are passed through the rails with standard spacing at 129mm centres. Panels from 1800mm high have a security comb (double row of sharp steel points 23mm x 2mm thick).

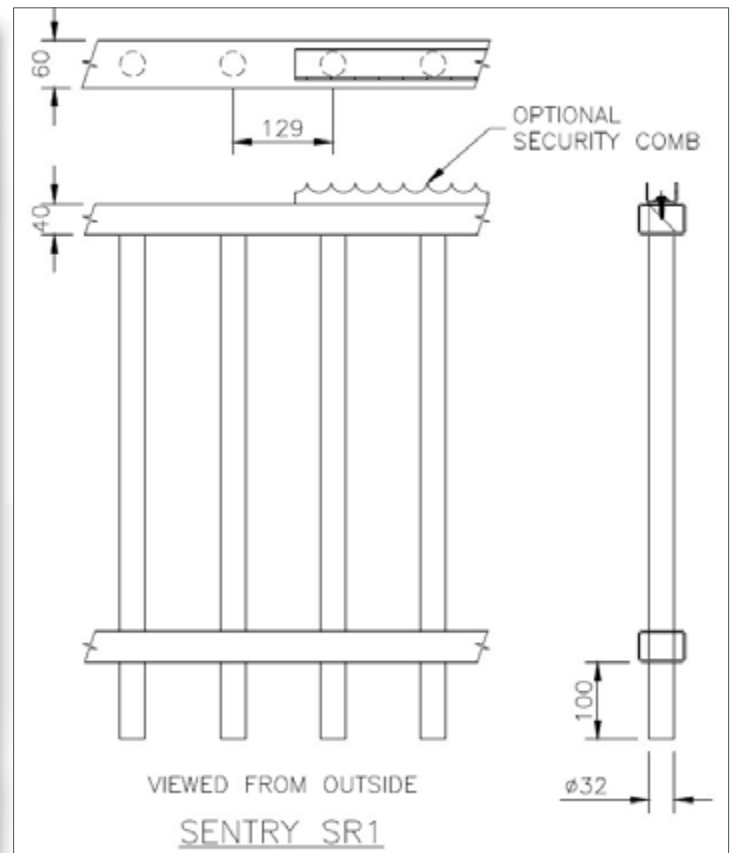
GATES

A1 (SR1) gates available

APPROVALS

LPS 1175 A1 (SR1)





HEIGHT (mm)	POST CENTRES (mm)	POST DIMENSIONS (mm)	OVERALL POST LENGTH (mm)
1800	3000	60 x 60	2500
2000	3000	60 x 60	2800
2500	3000	80 x 60	3300
3000	2484	80 x 60	3800

FINISHES

- Hot dip galvanised to BS EN 1461 as standard
- Hot dip galvanised and powder coated to BS EN 13438 in Black RAL 9005 or Green RAL 6005
- Other colours available on request
- Marine coat for installations within 500m of salt water or estuary

POST OPTIONS

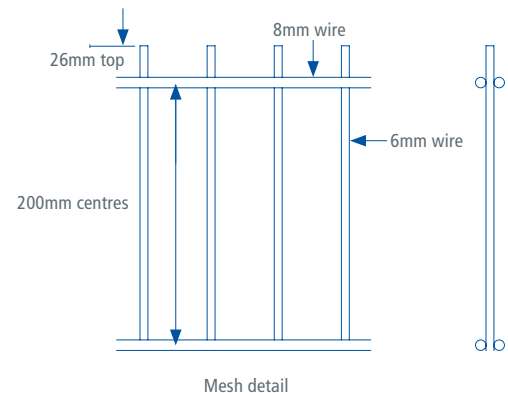
- Overlength set in concrete as standard
- Baseplated to bolt down onto concrete

EUROGUARD® PLATFORM HEAVY SR1 (A1)



EuroGuard® Platform Heavy SR1 (A1) system provides a welded mesh alternative to vertical railings and features a flat profile with heavy gauge twin horizontal wires for added rigidity and resistance to cutting.

- Wire centres 200 x 50mm
- Anti-tamper mesh to post fixings
- Anti-climb design
- 25-year service life guarantee



APPLICATIONS

- ▶ Commercial premises
- ▶ Schools
- ▶ Low - medium risk sites

PANELS

EuroGuard® Platform SR1 consists of 200mm x 50mm mesh, double 8mm horizontal wire, 6mm vertical wire.

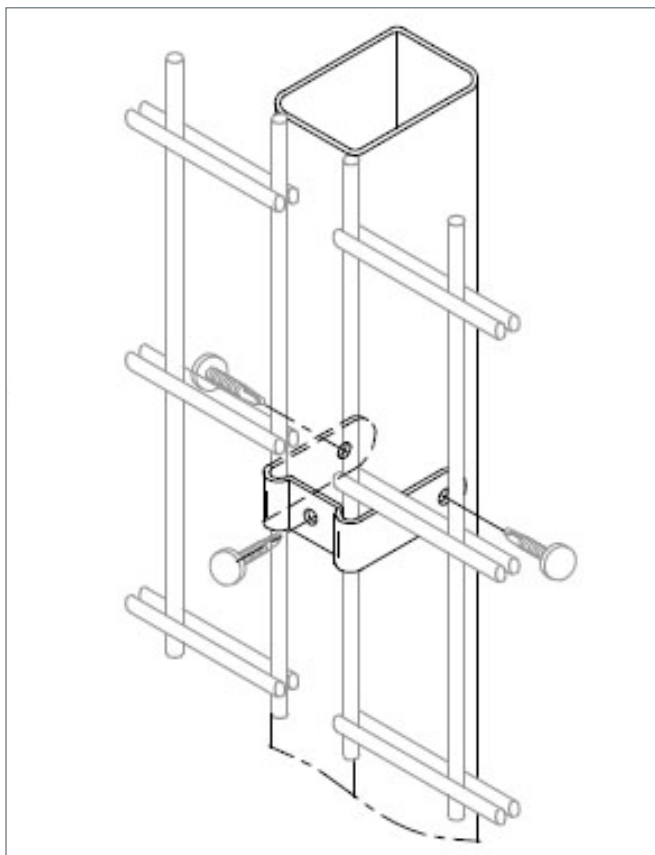
GATES

A1 (SR1) gates available

APPROVALS

LPS 1175 A1 (SR1)





HEIGHT (mm)	POST CENTRES (mm)	POST DIMENSIONS (mm)	OVERALL POST LENGTH (mm)
2030	3034	60 x 40	2800
2430	3054	80 x 60	3300

FINISHES

- Hot dip galvanised to BS EN 1461 as standard
- Hot dip galvanised and powder coated to BS EN 13438 in Black RAL 9005 or Green RAL 6005
- Other colours available on request
- Marine coat for installations within 500m of salt water or estuary

POST OPTIONS

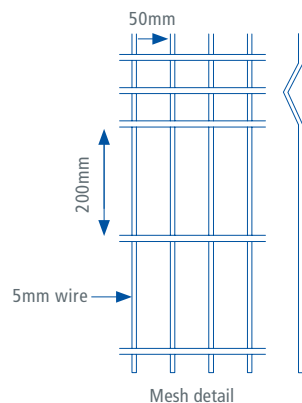
- Overlength set in concrete as standard
- Baseplated to bolt down onto concrete

EUROGUARD® COMBI SR1



EuroGuard® Combi SR1 (A1) fencing brings our unique experience and reputation in steel and timber fencing and gates together in a design that combines natural wooden slats with the strength of steel mesh. The combination of welded mesh panels and closely spaced, substantial timber slats provide a flat facing surface ensuring no foot or hand holds.

- A novel combination of unlike materials that is resistant to cutting
- Flat surface free from hand or foot holds
- Jakcure® treated timber slats guaranteed for 25-years
- 25-year service guarantee



APPLICATIONS

- ▶ Commercial premises
- ▶ Medium risk sites
- ▶ Schools

PANELS

EuroGuard® Combi SR1 panels 3m wide with 200mm x 45mm mesh, 5mm wires with 4 - 6 reinforcing folds depending on height.

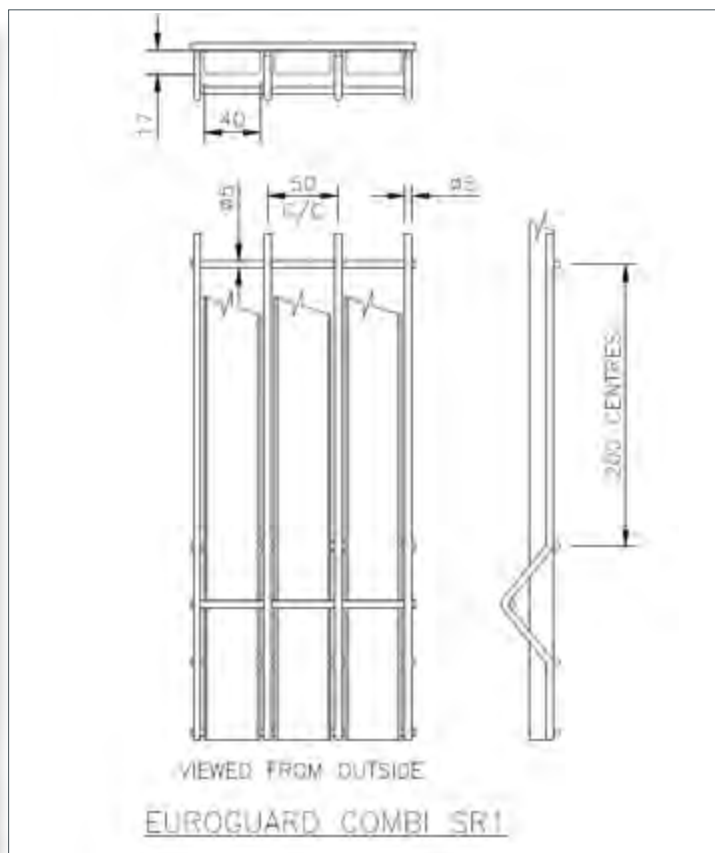
GATES

A1 (SR1) gates available

APPROVALS

LPS 1175 A1 (SR1)





HEIGHT (mm)	POST CENTRES (mm)	POST DIMENSIONS (mm)	OVERALL POST LENGTH (mm)
2070	3055	80 x 60	2800
2470	3055	80 x 60	3300
3110	3055	120 x 60 + spur post	4000

FINISHES

- Timber slats are planed, Jakcure® vacuum pressure treated as standard
- Mesh panels are Galfan® coated as standard
- Posts are hot dip galvanised to BS EN 1461 as standard
- Spur post as standard

- Posts can be hot dip galvanised and powder coated to BS EN 13438 in Black RAL 9005 or Green RAL 6005
- Mesh can be powder coated to BS EN 13438 in one of our standard colours
- Marine coat for installations within 500m of salt water or estuary

POST OPTIONS

- Overlength set in concrete as standard
- Baseplated to bolt down onto concrete
- Timber clad to front face to match fence

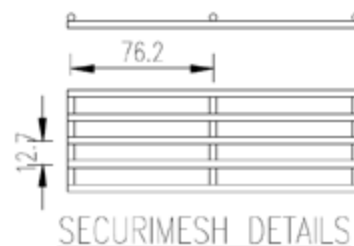
SECURI-MESH® SR1 (A1)



Where the application specifically requires a cost effective, heavy duty security mesh design to meet specifications including the use of CCTV, or where a visual deterrent is a primary consideration, our '358' Securi-Mesh® SR1 (A1) system provides an ideal solution.

Securi-Mesh® SR1 has been tested to A1 in LPCB's LPS1175: Issue 8, delivering a delay to attack using category A tools such as cable cutters, engineers hooks, glass cutters and pliers.

The '358' mesh design features small apertures, eliminating foot and finger holds and preventing objects from being passed through. Panels are fixed to posts using clamp bar fixings and are overlapped by a minimum of 37.5mm at posts to maintain integrity of protection.



APPLICATIONS

- ▶ Commercial Premises
- ▶ Schools
- ▶ Industrial Properties
- ▶ Low - Medium Risk Sites

STANDARD COLOURS

- Black RAL 9005
- Green RAL 6005
- Other colours are available on request

APPROVALS

LPS 1175 A1 (SR1)





- Overlapped by a minimum of 37.5mm at posts to maintain integrity of protection
- Anti-climb design
- 25 year service life guarantee
- Tested to LPS 1175: Issue 8 A1
- Clamp bar fixings
- Can be stepped to accommodate sloping ground
- Secured by Design

HEIGHT (mm)	POST CENTRES (mm)
1800 - 6000	2440

PANELS

Securi-Mesh® SR1 (A1) panels are constructed from 76.2 x 12.7mm mesh (3" x 1/2") with 4mm nominal wire. Panel widths are 2519mm as standard, with heights between 1800mm - 6000mm.

FINISHES

- Panels are Galfan® zinc alloy coated to BS EN 10244-2:2009 class A as standard
- Mesh can be powder coated to BS EN 13438 in one of our standard colours
- Marine coat for installations within 500m of salt water or estuary

POST OPTIONS

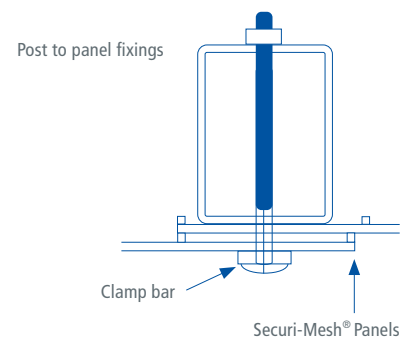
- Overlength set in concrete as standard
- Baseplated to bolt down onto concrete

SECURI-MESH® PLUS SR2 (B3)



Securi-Mesh® Plus SR2 (B3) provides an ideal solution for higher security perimeter applications with its double layer of "358" mesh and small apertures which eliminate foot and finger holds and prevent objects from being passed through. The vertical steel clamp bars employed in the panel to post fixing and to bond the mesh layers together provide increased rigidity to the design and make the system particularly resistant to cutting through using conventional hand and portable power tools.

- Flat surface free from hand or foot holds
- Mesh to be clamped to concrete seal or buried
- 25-year service guarantee



APPLICATIONS

- ▶ High risk sites
- ▶ Data centres
- ▶ Perimeters
- ▶ Utilities sites

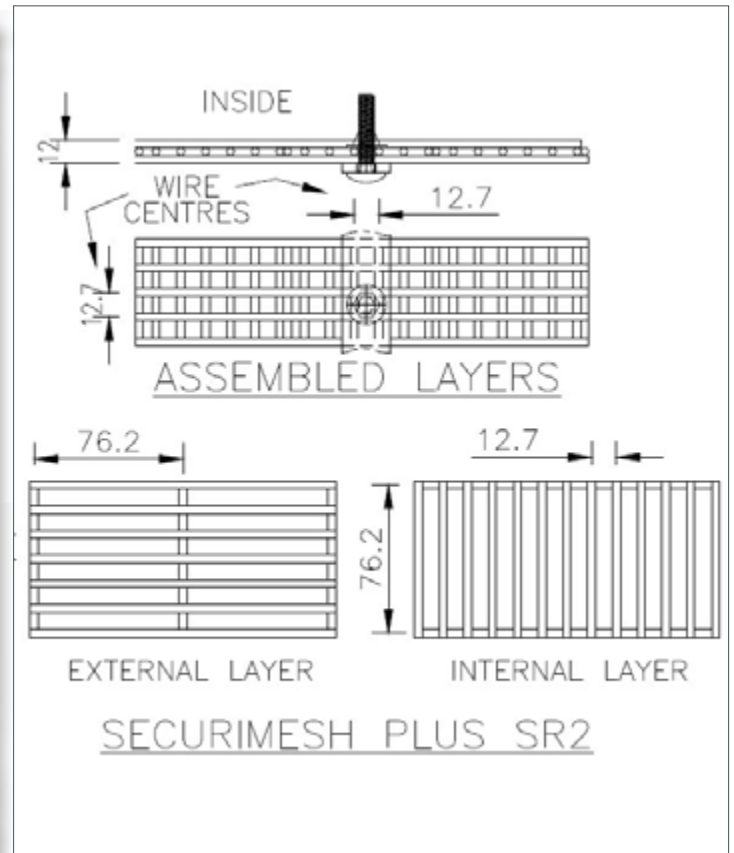
GATES

B3 (SR2) gates available

APPROVALS

LPS 1175 B3 (SR2)





Securi-Mesh® Plus SR2 Panel Specifications

Securi-Mesh® Plus SR2 features a double skin of staggered 76.2 x 12.7mm resistance mesh welded at each intersection and bolted together up to 2400mm high and a single layer of mesh above from 2400mm upwards.

HEIGHT (mm)	POST CENTRES (mm)
FROM 2442 TO 5000	2451

FINISHES

- All steel work galvanised to BS EN 1461:2009
- Posts are hot dip galvanised to BS EN 1461 as standard
- Posts can be hot dip galvanised and powder coated to BS EN 13438 in Black RAL 9005 or Green RAL 6005

- Panels can be powder coated to BS EN 13438 in one of our standard colours
- Other colours available on request
- Marine coat for installations within 500m of salt water or estuary

POST OPTIONS

- Post dimensions to suit fence height, site and ground conditions
- Overlength set in concrete as standard
- Base plated to bolt down onto concrete

JAKOUSTIC® CLASS 3 (C5)



Jakoustic® Class 3 is the only reflective acoustic barrier fence system certified to LPS 1175 SR3 and provides resistance to determined entry using a range of tools including battery power tools. The double layer of timber boards results in a totally flat face making climbing the fence extremely difficult and is ideally suited to applications requiring a natural timber façade, where privacy is important, or for the containment of noise into or out from a site.

- Double layer of 34mm thick timber boards provide a high level of resistance to cutting
- Anti-climb design with completely flat face allowing no foot or hand holds
- Also available as LPS 1175 F1 or G1 rated system
- Reflective acoustic barrier with up to 28dB* reduction in noise
- Jakcure® treated timber slats guaranteed for 25-years

*Jakoustic® Class 3 certified acoustic laboratory results:

Rating according to BS EN 1793:1998

Category: B3

Laboratory sound reduction: 28db

Superficial mass: 25 kg/m²

GATES

Matching non-certified single or double leaf gates available

APPROVALS

LPS 1175 C5 (SR3)





Jakoustic® Class 3 (C5) Specification

Jakoustic® Class 3 (C5) timber acoustic security barrier system is constructed with a double layer of 34mm thick, Jakcure® treated, interlocking 'V' timber boards fixed to galvanised steel posts.

HEIGHT (mm)	POST CENTRES (mm)	POST TYPE	OVERALL POST LENGTH (mm)
2500	2400	UNIVERSAL I BEAM	2500
2750	2400	UNIVERSAL I BEAM	2800
3000	2400	UNIVERSAL I BEAM	3300
3250	2400	UNIVERSAL I BEAM	3800

FINISHES

- Planed interlocking timber boards are Jakcure vacuum pressure treated as standard
- Posts are hot dip galvanised to BS EN 1461 as standard
- Posts can be powder coated to BS EN 13438 in one of our standard colours
- Other colours available on request

- Marine coat for installations within 500m of salt water or estuary

POST OPTIONS

- Post dimensions to suit fence height, site and ground conditions
- Overlength set in concrete as standard
- Base plated to bolt down onto concrete

UHS HEAVY MESH SR3 (C5)



UHS Heavy Mesh SR3 (C5) has been designed and tested to withstand forced entry using tools which include battery power tools. The SR3 mesh system is constructed using double skinned mesh with clamp bars added at 250mm centres and anti tamper fixings.

- Double skinned to provide a high level of security
- Stainless steel fixings
- Anti-climb design double skin 50 x 28mm mesh
- Clamp bars fixed at 250mm centres
- Heavy gauge wire-welded mesh security fencing system

Approvals

- LPS 1175 C5 (SR3)
- Secured by Design Police Preferred Specification



HEIGHT (mm)	POST CENTRES (mm)
2431	2505
3031	2505

POST OPTIONS

- Post dimensions to suit fence height, site and ground conditions
- Overlength set in concrete as standard
- Base plated to bolt down onto concrete

FINISHES

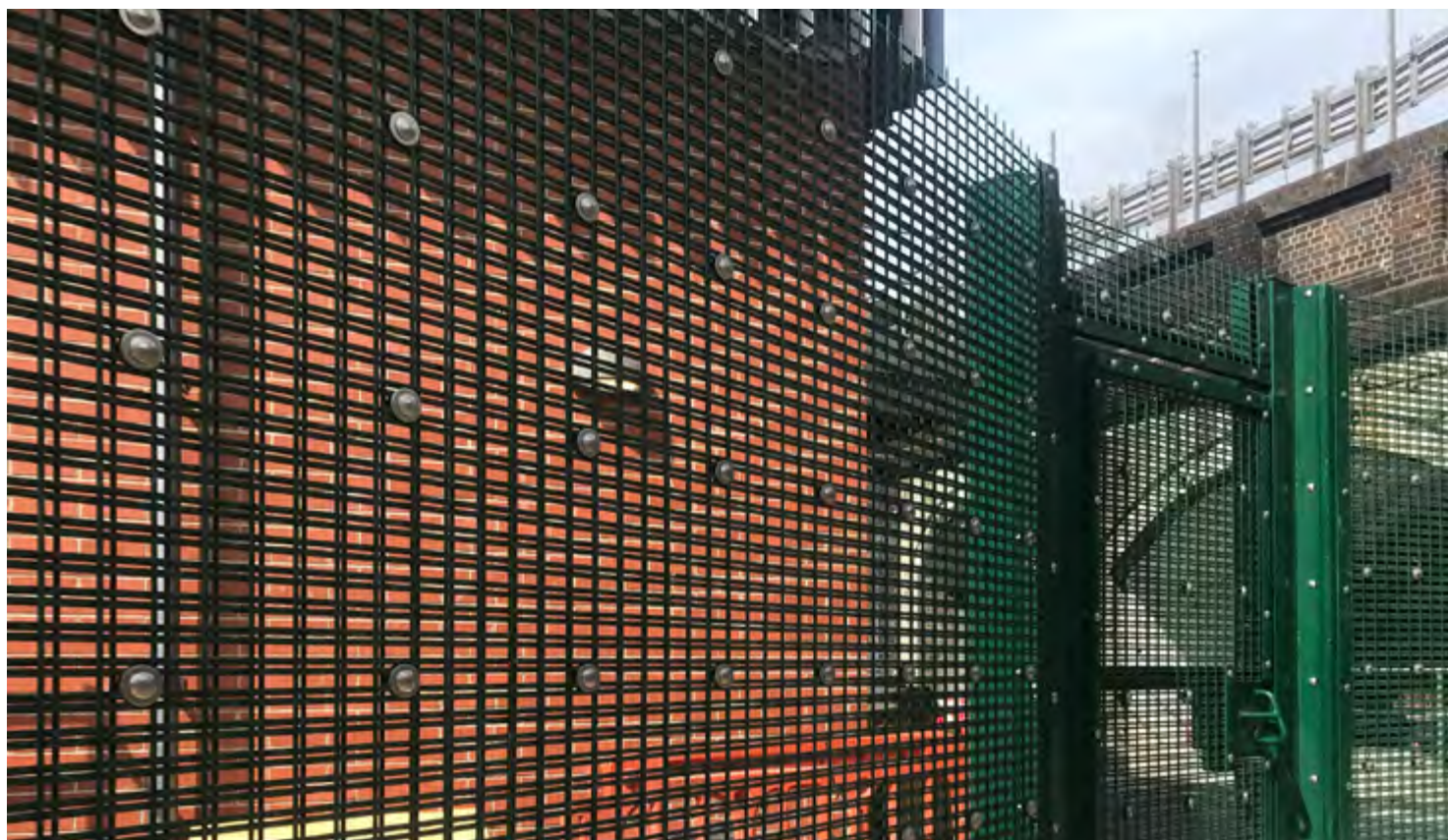
- All steel work galvanised to BS EN 1461:2009
- Posts are hot dip galvanised to BS EN 1461 as standard
- Posts can be hot dip galvanised and powder coated to BS EN 13438 in Black RAL 9005 or Green RAL 6005
- Other colours available on request

- Marine coat for installations within 500m of salt water or estuary

GATES

- Matching single leaf gates available

UHS EXTREME MESH SR3 (C5)



UHS Extreme Mesh SR3 (C5) has been designed and tested to withstand forced entry using tools which include battery power tools. The SR3 mesh system is constructed from double skinned mesh providing a high level of security. The fencing and gate system has been developed to meet with demands to give a robust level of security around high security applications.

- Double 50 x 30mm mesh skin - provides a high level of security
- Stainless steel fixings
- Anti-climb design
- Matching C5 (SR3) gates available

Approvals

- LPS 1175 C5 (SR3)
- Secured by Design Police Preferred Specification



HEIGHT (mm)	POST CENTRES (mm)
2431	2505
3031	2505

POST OPTIONS

- Post dimensions to suit fence height, site and ground conditions
- Overlength set in concrete as standard
- Base plated to bolt down onto concrete

FINISHES

- All steel work galvanised to BS EN 1461:2009
- Posts are hot dip galvanised to BS EN 1461 as standard
- Posts can be hot dip galvanised and powder coated to BS EN 13438 in Black RAL 9005 or Green RAL 6005
- Other colours available on request

- Marine coat for installations within 500m of salt water or estuary

GATES

Matching single leaf gates available

TRIDENT® 4 (D10) & TRIDENT® 5 (E10)



Vertical Bar and Welded Mesh panel security fencing systems.

Fence panels comprise of reinforced 32mm tubular vertical bars welded within 60mm x 40mm horizontal rails. The panels incorporate '358' mesh and are welded on both faces, with an optional 800mm concertina barbed tape topping.

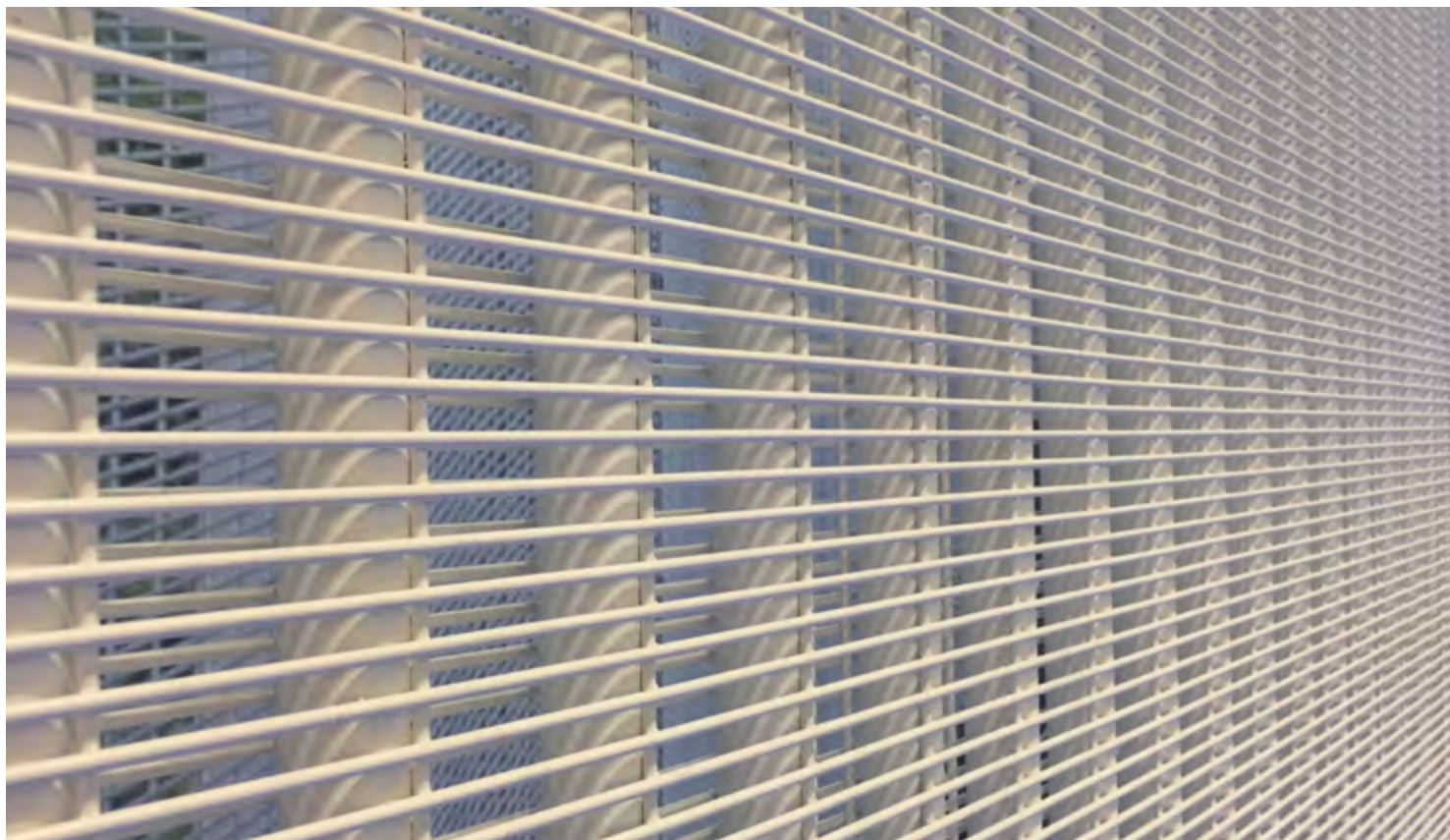
- Closely spaced pales composed of substantial wall thickness
- Incorporating cut-delay technology
- Anti-climb design with anti-scaling over deterrent
- 25-year service life guarantee

POST OPTIONS

- Post dimensions to suit fence height, site and ground conditions
- Overlength set in concrete as standard

FINISHES

- Panels are Galfan® zinc alloy coated to BS EN 10244-2:2009 as standard
- Posts are hot dip galvanised to BS EN 1461 as standard
- Posts can be hot dip galvanised and powder coated to BS EN 13438 in Black RAL 9005 or Green RAL 6005
- Other colours available on request
- Marine coat for installations within 500m of salt water or estuary



Trident® 4

- LPS 1175 D10 (SR4) Approved
- Securi-Mesh® fencing clad on both sides

HEIGHT (mm)	PANEL WIDTH (mm)	POST DIMENSIONS (mm)	TOPPING
3600	2450	120 x 120	Concertina barbed wire

Trident® 5

- LPS 1175 E10 (SR5) Approved
- Securi-Mesh® fencing clad on both sides

HEIGHT (mm)	PANEL WIDTH (mm)	POST DIMENSIONS (mm)	TOPPING
4200	2450	120 x 120	Concertina barbed wire

APPROVALS

LPS 1175 D10 (SR4)

LPS 1175 E10 (SR5)

