

	Ref		Ref
Spring Catch Set made up of (HJ + K) For use behind posts	271300 ●	Gate Catch with wooden stump and wear plates 1.8m x 100 x 100mm to support full height of gate and catch on 2nd rail down for use on Entrance and Uni-Field gates (P)	351800BM ●
Spring Catch Set as alternative to item K (HJL) For use between posts	271350BM ●	Universal Hold Back Catch for wood or metal gates with wear plates (Q)	272000 ●
Hinge Set with adjustable bottom hinge for wooden posts supplied with anti-theft nuts (ABCD)	271800 ●	Loopover Catch complete with bolt (for connecting two gates) and staple with extra knob (S)	271410 ●
Hinge Set with hooks to build into brickwork (ACG)	274100 ●	Auto Catch with striker (T)	438300 ●
Hinge Set with double swing rockerbottom hinge for wooden posts (A B &E)	350100 ●	Drop Bolt (U)	351400 ●
Pair Hooks on 100mm plate 19mm pin (M)	438400 ●	Heavy Lockable Drop Bolt	351410BM
Pair of Hinge Hooks for concrete or wooden posts from 150 - 250mm (extra long) (F)	438500 ●	Anti-Lift device (V) for padlock see page147 (Not for use with hooks on plates Ref 4384)	271200BM
Wrought Heavy Latch for gates with rocker bottom hinge shown pic N. Constituent parts shown in pics marked N-A and N-B	351010BM ●	Fitting irons to gates	271700 ●
Gate Catch to fix in cement with wear plates (O)	1 BSLPOST ●	Gate Latch-GRP General Purpose - 1 way lockable (W)	354600
		Gate Latch Delux 2 Way lockable - rust free, lock from either side of the gate (X)	354700

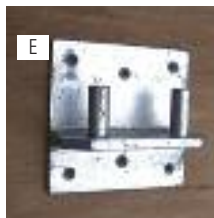
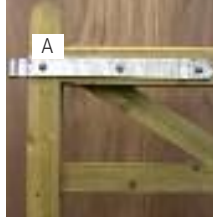
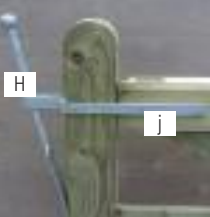
Safety Warning: Jacksons magnetic pull latches are designed to be operated by adults only. Children must be supervised at all times if operating moving parts.

Self closing Adjustable Hinge

Gives vertical and horizontal adjustment with the stainless steel spring ensuring that the gates always close. We recommend that it is used with the magnetic latch range, for gates up to 1.5m

Self closing adjustable hinge for timber gate (A)	354400 ●
Self closing adjustable hinge for steel gate (B)	354420 ●





The Vertical Pull Latch is ideal for gates that need to always to be closed, for example swimming pool gates and where you need to confine pets.

Vertical Pull Latch (C) 354330 ●



The Extended Pull Latch is the same as the Vertical Pull Latch, but the handle has been extended to ensure toddlers cannot reach the latch.

Extended Pull Latch (D) 354500 ●



The Pull Latch is a general all purpose latch suitable for gates that do not require the security of a keyed lock.

Pull Latch (E) 354200 ●



Jakcured Gate Posts

Square with tops shaped four ways. The gate hanging posts are stress relieved by having a saw cut in the middle of one side allowing the timber to move as it dries out or swells according to the weather, thus avoiding unsightly splits. The Hanging Posts should be placed so the stress relieving cut is at 90° to the gate hooks. For ballast & cement see page 146. We recommend that for gates 2.4m and wider 175 x 175mm posts are used.

Length	Section	Ref
Hanging Posts for field gates		
2.1m Fine sawn finish	175 x 175mm	272400 ●
2.1m Fine sawn finish	150 x 150mm	274000 ●
Slam Posts		
2.1m Fine sawn finish	150 x 150mm	274000 ●
Gate Posts for special gates		
2.4m Fine sawn finish	125 x 125mm	272500 ●
2.4m Fine sawn finish	175 x 175mm	273800 ●
2.4m Fine sawn finish	150 x 150mm	273900 ●
2.7m Fine sawn finish	125 x 125mm	272600 ●
2.7m Fine sawn finish	150 x 150mm	274090 ●
2.7m Fine sawn finish	175 x 175mm	273880 ●



Wall Plates

1.8m Planed finish	100 x 75mm	228000 ●
2.1m Planed finish	100 x 75mm	228050 ■
2.4m Planed finish	100 x 75mm	228100 ■
1.8m Planed finish	100 x 50mm	171000 ●
2.1m Planed finish	100 x 50mm	171021 ●
2.4m Planed finish	100 x 50mm	171024 ●

Centre Gate Stops

450 x 115 x 150mm	
For use with entrance and uni-gates	927110 ■
Courtyard gates 65mm	927120 ●
Featherboard and Boarded gates	602200 ■

