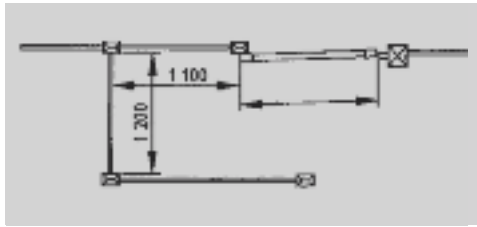




Mobility Timber Kissing Gate (wheelchair friendly)
 The Mobility Kissing Gate uses the same materials as the standard Timber Kissing Gate, but with a 1.5m gate, which makes it accessible for wheelchair users.
 Designed in accordance with BS 5709:2006



Mobility timber Kissing gate complete set

Ref 299800BM ■

RADAR Padlock
 Rights of way gates can be secured in the closed position with a padlockable drop bolt, this can be used with a RADAR padlock.



RADAR padlock and three keys

Ref 284550BM ■



Timber Kissing Gate

This style of gate has been commonplace in rural areas for years. They are particularly useful in districts populated by elderly people, where a stile is unsuitable. The kissing gate allows easy access through fences with no climbing necessary.

Specification

The set consists of one 1.05m wide, five bar, Jakcured Uni- Field Gate. Hung on galvanised double band hinges with adjustable bottom eye. The hanging post is 2.1m long x 125 x 100mm section, shaped four ways. The two slam posts are 1.8m long x 125 x 100mm section. The 'V' shaped enclosure fence has four rails of 100 x 38mm section morticed into each side of the corner post, which is also 1.8m long x 125 x 100mm section. All manufactured from Jakcured softwood. We recommend that all posts should be set in concrete. This unit is suitable for inserting in any type of fence in almost any situation.

Standard timber Kissing Gate
complete set

Ref
2999008M ■



Jacksons Galvanised Metal Kissing Gate

This popular self closing six rail Kissing gate is now available manufactured from hot dip galvanised metal, so it will resist rusting for many years and will be virtually maintenance free once installed.

Specification

Dimensions: 1520mm wide, 1170mm high. Manufactured from 25 x 25mm RHS with four posts 50 x 50mm RHS including adjustable bottom hinge which allows the gate to swing shut either way. Supplied in three sections plus posts and location bars for below ground. All hot dipped galvanised. We can also supply the gate partially clad with welded mesh. We recommend that the post should be set in concrete. This unit is suitable for inserting in any type of fence in almost any situation.

Metal Kissing gate complete set

264600BM ○



Stile with Dog Gate (Rabbit Proof)

Ever thought stiles were designed only for walkers without their canine companions, well here's Jacksons solution. No more lifting the dog over and getting covered in mud. Now all you need to do is pull up the handle and a dog sized gap appears. Far easier all round. No need to worry if your stile is in a rabbit proofed fence, we have added a solid bottom to fill the gap so the rabbits can't get through.

Specification (with dog gate)

3 x 1.8m long x 125 x 75mm posts morticed to take 4 rails. The post length allows for 525mm to be set in the ground. 4 rails 1150mm long, 100 x 38mm section. The two treads are 1.2m x 175 x 50mm section, supported by two 1.35m x 125 x 38mm and two 1.05m x 125 x 38mm tread posts.

The dog gate has a top rail for nailing between the posts, with holes to support the handle attached to the plywood gate, which is contained within the slides. All manufactured from Jakcured softwood. We recommend that all posts are set in concrete. This unit is suitable for inserting in any type of fence in almost any situation.



Stile with Dog Gate

Stile complete with dog gate

Stile (without dog gate)

Dog gate for attaching to existing stile

Ref

201700BM ○

200700BM ■

201800BM ○

Two Way R.O.W. Latch

Two way latch especially suitable for self closing gates where disabled people need to gain access.

Supplied complete with latch timber packer and activating pin.

271100 ■



Bridle Gates

1 x 1.8m wide Universal Gate, 1.3m high overall 2 x 2.1m hanging posts 150 x 150mm, sawn finish 1 x Hinge set with adjustable bottom hinge 1 x Spring catch set galvanised Fitting irons to gate. When ordering please state either right or left hand hanging.

299770BM ■



Diamond Rail fencing

Posts (for Diamond Rail fencing) With birds mouth top, 100 x 100mm section, softwood planed finish. Galvanised strap to be formed on site and secured to post with 50mm nails (see page 147).

Posts (for Diamond Rail fencing)	Ref
0.9m long	200900 ■
1.2m long	201000 ■
Rails (for Diamond Rail fencing)	
70x70mm nominal section 2.7m (posts at 1.35m centres)	640600 ●
70x70mm nominal section 1.8m (posts at 1.8m centres)	640300 ●
Galvanised Strap for Diamond Rail	201100 ●



Post and Chain Fencing

Posts for Chain Fencing Jakcured Softwood 100mm square section, planed shaped top 1.5m
Chain galvanised 50mm x 6mm links spikes in every other link price per metre
Hooks galvanised for attaching chain to wooden posts (including screws)

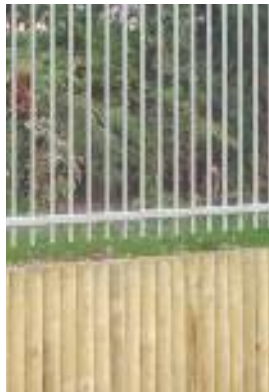
350900 ■
350600 ●
350700 ●



Silver Rail fencing

Posts are 125 x 75mm section Jakcured soft wood with rounded tops. Allow 1 post per 2m (Rails can be supplied coloured. Price on application).

Intermediate Post 1.5m	201200 ■
Corner Posts 1.5m	201300 ○
End Post 1.5m	201500 ■
Rails 6m Galvanised rail (41.5mm diam. inc. connector)	064000BM ●



Jakcured round timber

These timbers are ideal for landscaping use as pictured left (pic 5) dug in and used as a retaining wall.

Sizes 50, 60, 75, 90, 100, 125 and 150mm diameter, half round 75 and 100mm - please ask us for information an availability.