

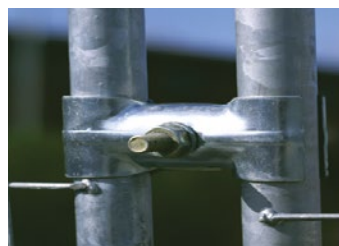
Anti-Climb Express® Temporary Fencing



Image is for illustrative purposes as we no longer sell concrete feet for temporary fencing



*Thermoplastic foot replaces previous plastic foot filled with concrete.



Anti-Climb Express® Temporary Fencing panels are constructed from galvanised tube frames with welded mesh infill. They are 2.00m high x 3.50m wide, clad with 38mm x 253mm mesh. Standard panels have 38mm uprights with a 25mm top & bottom rail. Heavy duty panels have a 38mm frame throughout. It is easy to create a gate at any point on the perimeter.

Express panels are economical as they can be used time after time. Panels stack easily and can be delivered accompanied by fork lift for easy distribution. They are surprisingly light and easy to handle. It is possible to erect four metres a minute.

Anti-Climb Express® Temporary Fencing Panels

Temporary Fencing	Ref
Anti-Climb Heavy Duty (10x min. delivery qty)	050010 ●
Anti-Climb Standard (10x min. delivery qty)	050008 ●
Pedestrian gate 2.00m x 1.00m wide	050200 ●
1.10m high crowd control barrier	050009 ■
Footings	
Thermo Plastic Foot*	050166 ●
Double Metal Foot	050171 ■
Fence Stabiliser	050039 ●
Accessories	
Fence coupler - 2 per panel standard	050035 ●
Gate Hinge	050036 ●
Anti-Lift Device	050037 ●

Express panels do not qualify for the Jacksons 25 year service life guarantee as they are a temporary product.

● Stock items ■ Check for availability

Galvanised Tubular Fencing



Our galvanised tubular fencing system works with both chain link and welded mesh cladding. The tubular construction makes it far stronger than old fashioned 'rusty' angle iron or heavy concrete post systems, it also makes it less vulnerable to vandals. Being tubular, it also eradicates the chances of the top rails sagging, which is a common problem with old systems, so it stays looking good for much longer. Extra security can be added by fixing vertical or cranked extensions for barbed wires or tapes on to the top of the system.

On the next pages we show the six systems we offer for tubular fencing for both welded mesh and chain link cladding.

Please ask our sales advisors for help with any technical details you require, call 0800 41 43 43.

Jacksons Fencing is a Secured by Design Licensed Company with products which meet technical standards endorsed by the UK Police Service.

To see our latest prices, view our Express Fencing on our website by scanning the QR code



Galvanised Tubular Fencing System

- Galvanised tubular fencing system for both chain link and welded mesh cladding
- Tubular construction for extra strength - less vulnerable to vandalism
- Supersedes old fashioned 'rusty' angle iron or heavy concrete post systems
- No sagging with extra strength from the top rail - stays looking good for much longer
- Extra security options - vertical or cranked extensions for barbed wires or tapes

System 1

Tubular fencing system without a top rail, in medium and heavy duty.

Heavy and medium grade tubular posts with straining posts and struts. Intermediate posts are supplied with line wire clips and a post cap (see detail). Straining posts are supplied with struts (for use at ends, corners and changes in direction), stretcher bars and winders. Suitable for domestic installations, dog runs etc.

System 2

Tubular fencing system without a top rail, heavy duty with posts vertically extended for 3 rows of barbed wire.

Heavy grade tubular posts with straining posts and struts. Intermediate posts are supplied with line and barbed wire clips and a post cap (see detail). Straining posts are supplied with struts as required, stretcher bars and winders (see detail). Suitable for industrial fencing with minimum security applications.

System 3

Tubular fencing system with a top rail and heavy duty posts. (Will not suffer deformation when climbed over).

Intermediate posts are supplied with line wire clips and a post cap to locate the top rail (see detail). Straining posts are supplied with stretcher bars and winders, and fittings for the top rail (for use at ends, corners and changes of direction). Suitable for domestic installations where the fence will be tested and the long term look of the fence is important.

System 4

Tubular fencing system with a top rail & heavy duty posts & vertical extensions for 3 rows of barbed wire.

Intermediate posts are supplied with line wire clips and a post cap to locate the top rail and high tensile barbed wire (see detail). Straining posts are supplied with stretcher bars, winders and fittings for the top rail, as well as winders for the barbed wire (for use at ends, corners and changes of direction). Suitable for quality industrial installations where the fence will be tested and the long term look of the fence is important.

System 5

Tubular fencing system with a top rail, heavy duty posts and cranked intermediate extensions for 3 rows of barbed wire with struts for securing cranked extensions on end and corner posts.

Intermediate posts are supplied with line wire clips (see detail) and a post cap to locate the top rail and high tensile barbed wire. Straining posts are supplied with stretcher bars, winders, and fittings for the top rail, as well as winders for barbed wire (for use at ends, corners and changes of direction). Suitable for quality industrial installations where the fence will be tested and the long term look of the fence is important.

System 6

Tubular fencing system with a top rail, heavy duty posts and 'Y' extensions for 6 rows of barbed wire.

Intermediate posts are supplied with line wire clips (see detail) and a post cap to locate the top rail and high tensile barbed wire. Straining posts are supplied with stretcher bars, winders and fittings for the top rail, as well as winders for barbed wire (for use at ends, corners & changes of direction). Suitable for high security installations, where the fence will be tested & the long term look of the fence is important. In addition to six rows of barbed wire, concertina razor wire can be fixed in the 'Y' to make an almost impenetrable barrier.

Post Setting etc.

Intermediate posts should be set at 3.00m centres, straining posts should be set at all dramatic changes of direction and levels, with a maximum 100m for straight runs or 69m if the fence has no top rail. All straining posts should be set in concrete and intermediate posts if it is a security fence.

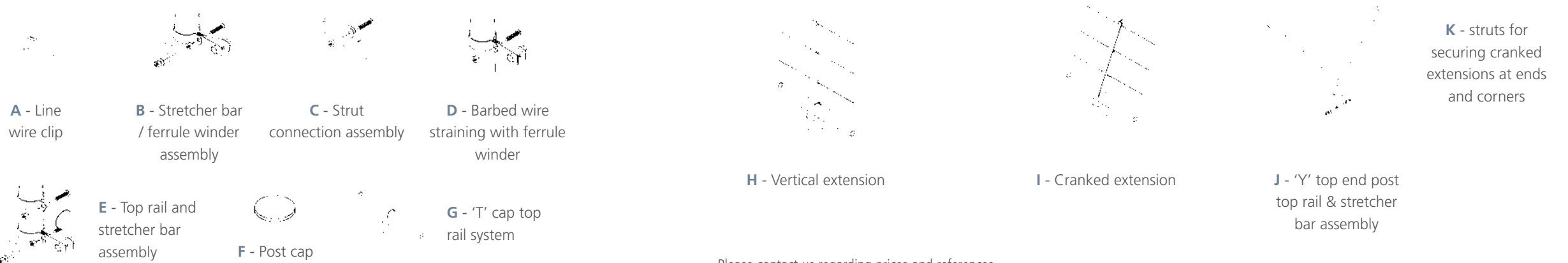
Posts should be set at the following depths:

- Fence heights up to 1.40m - 600mm in the ground
- Fence heights from 1.50m to 3.05m - 750mm - 800mm in the ground
- Fence heights over 3.05m - 800mm in the ground



Details on Systems 1 - 6

Drawings A to K below correspond to the circled figures in the diagrams for Tubular Fencing Systems 1 to 6 above.



Please contact us regarding prices and references.

System 1 Medium

Fence Height	Intermediate posts	
	Ref	
0.90m	061509BM	
1.20m	061512BM	
1.40m	061514BM	
1.80m	061518BM	

Top Rail

	Ref		Ref
6m with connector	064000BM		064000BM

System 1 Heavy

Fence Height	Intermediate posts		End posts		Corner 2 way posts	
	Ref		Ref		Ref	
0.90m	061609BM		062609BM		063609BM	
1.20m	061612BM		062612BM		063612BM	
1.40m	061614BM		062614BM		063614BM	
1.80m	061618BM		062618BM		063618BM	
2.00m	061620BM		062620BM		063620BM	
2.40m	061624BM		062624BM		063624BM	
2.75m	061627BM		062627BM		063627BM	
3.05m	061630BM		062630BM		063630BM	
3.60m	061636BM		062636BM		063636BM	

System 2

Fence Height	Intermediate posts		End posts		Corner 2 way posts	
	Ref		Ref		Ref	
1.80m	061718BM		062718BM		063718BM	
2.00m	061720BM		062720BM		063720BM	
2.40m	061724BM		062724BM		063724BM	
2.75m	061727BM		062727BM		063727BM	
3.05m	061730BM		062730BM		063730BM	
3.60m	061736BM		062736BM		063736BM	

System 3

Fence Height	Intermediate posts		End posts		Corner 2 way posts	
	Ref		Ref		Ref	
0.90m	061109BM		062109BM		063109BM	
1.20m	061112BM		062112BM		063112BM	
1.40m	061114BM		062114BM		063114BM	
1.80m	061118BM		062118BM		063118BM	
2.00m	061120BM		062120BM		063120BM	
2.40m	061124BM		062124BM		063124BM	
2.75m	061127BM		062127BM		063127BM	
3.05m	061130BM		062130BM		063130BM	
3.60m	061136BM		062136BM		063136BM	



System 4

Fence Height	Intermediate posts		End posts		Corner 2 way posts	
	Ref		Ref		Ref	
1.80m	061318BM		062318BM		063318BM	
2.00m	061320BM		062320BM		063320BM	
2.40m	061324BM		062324BM		063324BM	
2.75m	061327BM		062327BM		063327BM	
3.05m	061330BM		062330BM		063330BM	
3.60m	061336BM		062336BM		063336BM	

System 5

Fence Height	Intermediate posts		End posts		Corner 2 way posts		2 way posts	
	Ref		Ref		Ref		Ref	
1.80m	061218BM		062218BM		063218BM		064218BM	
2.00m	061220BM		062220BM		063220BM		064220BM	
2.40m	061224BM		062224BM		063224BM		064224BM	
2.75m	061227BM		062227BM		063227BM		064227BM	
3.05m	061230BM		062230BM		063230BM		064230BM	
3.60m	061236BM		062236BM		063236BM		064236BM	

System 6

Fence Height	Intermediate posts		End posts		Corner 2 way posts		2 way posts	
	Ref		Ref		Ref		Ref	
1.80m	061418BM		062418BM		063418BM		064418BM	
2.00m	061420BM		062420BM		063420BM		064420BM	
2.40m	061424BM		062424BM		063424BM		064424BM	
2.75m	061427BM		062427BM		063427BM		064427BM	
3.05m	061430BM		062430BM		063430BM		064430BM	
3.60m	061436BM		062436BM		063436BM		064436BM	

Key: GALV = Hot Dipped Galvanised. PPC = Polyester Powder Coated.

Chain Link Gates

Chain Link Gates - suitable for domestic & heavy duty fencing using the Galvanised Tubular System. The standard chain link gates are made for 980mm opening and are 50mm shorter than the fence height.



They are right or left hand hanging and clad with galvanised coated chain link, also available in a green finish. The framing is made from 42mm diameter galvanised tube. The gates come ready for hanging, complete with hinge pins, and bolts for attaching to the end strainer.



Single or Double-leaf Gates for Industrial Use

Single or double-leaf gates can be supplied for industrial use to almost any specification and degree of security. Gates can be made to suit various conditions and to hang in line between posts for 90° opening or behind the posts for 180° openings and are manufactured 0.91m wide.

- Galvanised tubular system gates with both chain link and welded mesh cladding.
- Suitable for domestic or heavy duty fencing.
- Galvanised finish with optional polyester powder coating.
- Single or double leaf for industrial use.
- Security options - as with fencing system extensions for barbed wires or tapes.
- Tubular construction for extra strength - less vulnerable to vandals.

Fence Height	Gate Height	Plastic Coated Infill		Galvanised Infill	
		Ref		Ref	
0.90m	0.86m	309610		309661	
1.20m	1.17m	309710		309771	
1.40m	1.32m	309810		309881	
1.80m	1.78m	309910		309991	
2.00m high tennis court gate, made in a frame for easy installation fitted with an integral key lock.				051020BM	



Welded mesh cladding



To see our latest prices, view our Chain Link gates on our website by scanning the QR code

Items to Consider

- Single or double leaf.
- Height of gate frame.
- Width of opening.
- Opening inwards or outwards.
- Opening arc 90° or 180°.
- Gate posts (round).
- Chain link infill available in plastic covered or galvanised wire.

Hinge Pack

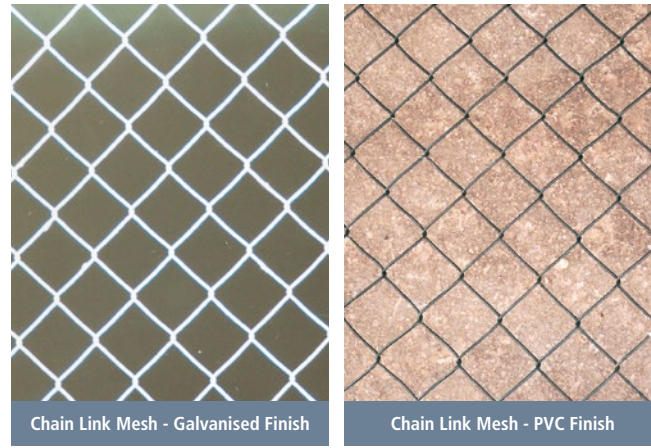
With bolts for attaching to end strainer posts. Included free of charge with gates. Please specify type required.

Description	Ref
Fittings kit for gates, included free of charge with gates.	307777BM

Chain Link Galvanised - 50mm Mesh

Suggestions for use:-

- The galvanised tubular system on pages 146 - 149 gives greater support and strength to the chain link & prevents deformation of the top.
- 2.5mm Galvanised and 1.7/2.5mm are suitable for general domestic, 2.24/3.15mm for site compounds and tennis courts - 2.75m high.
- Galvanised is best for dogs, 2.5mm for most breeds, but 3mm should be used for the stronger and larger breeds.
- For heavy industrial use 3mm or 3.5mm galvanised or PVC coated, 2.5/3.55mm, 3.0/4mm or 3.5/4.75mm according to the situation.



Roll Height			0.9m	1.2m	1.4m	1.8m	2.0m	2.4m	2.75m	3.05m
Standard No. of Line Wires			2	3	3	3	3	4	5	5
Wire Size	Gauge	Length	Ref	Ref	Ref	Ref	Ref	Ref	Ref	Ref
2.5mm	12½g	25m	300100 ●	300200 ●	300300 ●	300400 ●	-	-	-	-
2.5mm	12½g	12.5m	-	-	-	-	311700 ●	307000 □	305000 □	-
3.0mm	10½g	25m	300500 ●	300600 ●	300700 ●	-	-	-	-	-
3.0mm	10½g	12.5m	-	-	-	300800 ●	315300 □	303700 ●	305200 □	303800 □
3.55mm	9½g	12.5m	305900 □	306100 □	306900 □	315700 □	316100 □	316500 □	316900 □	317300 □

Note: Separate galvanised line wire on page 130. Chain Link fencing conforms to B.S. 1722 part 1, galvanising conforms to BS EN 10223. Line wire is supplied with each roll. Non stock items 21-35 days delivery. Free fence erection instructions available upon request.

Chain Link Galvanised PVC Coated - 50mm Mesh

Roll Height			0.90m	1.20m	1.40m	1.80m	2.00m	2.40m	2.75m	3.05m
Standard No. of Line Wires			2	3	3	3	3	4	5	5
Wire Size	Length	Ref	Ref	Ref	Ref	Ref	Ref	Ref	Ref	Ref
1.7/2.5mm (Green only)	25m	300900 ●	301000 ●	301100 ●	301200 ●	-	-	-	-	-
1.7/2.5mm (Green only)	10m	303300 ●	303400 ●	303500 □	303600 ●	-	-	-	-	-
2.24/3.15mm 13.5 /10.5g	25m	301300 ●	301400 ●	301500 ●	301600 ●	-	-	-	-	-
2.24/3.15mm 13.5 /10.5g	12.5m	-	-	-	-	305500 □	307500 □	305400 □	305700 □	-
2.5/3.55mm 12 /9.5g	12.5m	302912 ●	303012 ●	303112 □	303212 ●	304500 □	306300 □	305600 □	306500 □	-
3.0/4.0mm 10/2/8g.	12.5m	309500 □	310000 □	312100 □	304000 ●	306700 □	304100 ●	307100 □	304200 □	-
3.55/4.75mm 9.5/6.5g.	12.5m	321900 □	322000 □	322100 □	307900 □	308000 □	308100 □	308200 □	308300 □	-

● Stock items □ Supplied to order (Cannot be cancelled once ordered).



Tennis Court Fence

Tennis court fence 2.75m high constructed of tubular posts 60.3mm diameter, with a galvanised top rail and struts of 41mm diameter complete with tubular formed gate. The whole court clad with plastic coated chain link 50mm mesh, 3.15mm overall, with 2.24mm galvanised core wire complete with plastic coated line and tying wires.

- Galvanised tubular system 3 Tennis Court Surrounds with both chain link and welded mesh cladding.
- Galvanised finish with optional polyester powder coating (at extra cost).
- Tubular construction for extra strength - less vulnerable to vandals.
- Comes complete with plastic coated line and tying wires.

Single or Double Court Fencing

Description	Single Court 18m x 36m		Double Court 34m x 36m	
	Qty		Qty	
3.5m long galvanised corner posts complete with fittings & struts.	4		4	
3.5m long galvanised intermediate posts.	32		44	
Top Rail 6m Galvanised top rail with connectors.	18		24	
Tennis Court Gates and frame Galvanised 1m wide x 2m high complete with Galvanised chain link infill and key lock.	1		2	
Chain Link 12.5m rolls Green PVC coated with galvanised core wire, 2.75m high, 3.15/2.24mm gauge.	9		12	
Tying wire 1kg. coils 2mm PVC coated.	2		2	

● Stock items □ Supplied to order (Cannot be cancelled once ordered).

Heavy Welded Mesh - Galvanised Finish

Height	Mesh	Wire Size	Length of Roll	Ref
0.90m	50x50mm	2.5mm	25m	520000 ●
0.90m	50x50mm	3.0mm	25m	520100 ●
1.20m	50x50mm	2.5mm	25m	520400 ●
1.20m	50x50mm	3.0mm	25m	520500 ●
1.80m	50x50mm	2.5mm	25m	521500 ●
1.80m	50x50mm	3.0mm	25m	521600 ●
1.80m	75x25mm	3.0mm	25m	521700 □
2.40m	50x50mm	2.5mm	12.5m	522100 ●
2.40m	50x50mm	3.0mm	12.5m	522200 ●
2.67m	75x25mm	3.0mm	12.5m	522999 □
2.40m	75x25mm	3.0mm	12.5m	522300 □

Heavy Welded Mesh - Green PVC Finish

Height	Mesh	Wire Size	Length of Roll	Ref
0.90m	50x50mm	3.1/2.5mm	25m	520300 ●
1.20m	50x50mm	3.1/2.5mm	25m	520800 ●
1.80m	50x50mm	3.1/2.5mm	25m	521900 □
0.90m	50x50mm	3/3.5mm	25m	522750 □
1.20m	50x50mm	3/3.5mm	25m	522760 □
1.80m	50x50mm	3/3.5mm	25m	522780 □
2.40m	50x50mm	3/3.5mm	25m	522800 □

Heavy Welded Mesh - Black PVC Finish

Height	Mesh	Wire Size	Length of Roll	Ref
0.90m	50x50mm	3/3.5mm	25m	522759 □
1.20m	50x50mm	3/3.5mm	25m	522769 □
1.80m	50x50mm	3/3.5mm	25m	522789 □
2.40m	50x50mm	3/3.5mm	25m	522809 □

Our tubular system works equally well with welded mesh as an alternative cladding. Galvanised to BS EN 10223. For Line wire see page 130.

Light Welded Mesh

Galvanised rolls of 30m or 6m welded mesh are ideal for pet cages, puppy runs and aviaries. Other uses include greenhouse staging for making trays baskets and seedling guards.

There are literally hundreds of other uses to which people put this adaptable mesh. Height is 900mm.

Mesh (mm)	Gauge	6m Roll Ref	30m Roll Ref
13 x 13	19	364000 ●	362100 ●
13 x 25	19	364100 ●	362700 ●
25 x 25	16	364400 ●	362400 ●