

NOTES.

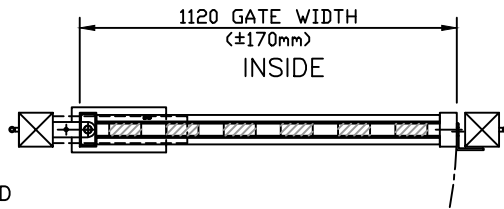
ALL DIMENSIONS ARE IN mm (U.N.O)
 GAP UNDERNEATH GATES IS BASED
 UPON THE SITE BEING LEVEL.

Materials.

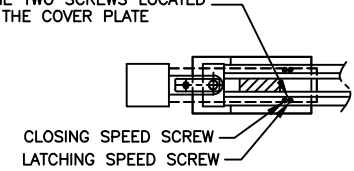
POSTS - 100 x 100 x 3 SHS
 RAILS - 40 x 6 F/BAR
 STILES - 100 x 50 x 3 RHS

Finish.

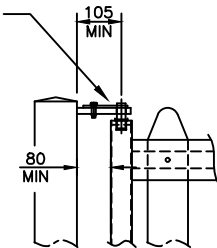
GALVANISED TO BS EN ISO 1461:1999
 POWDER COATED: GREEN RAL 6005
 TIMBER: JAKCURED & STAINED OR PAINTED



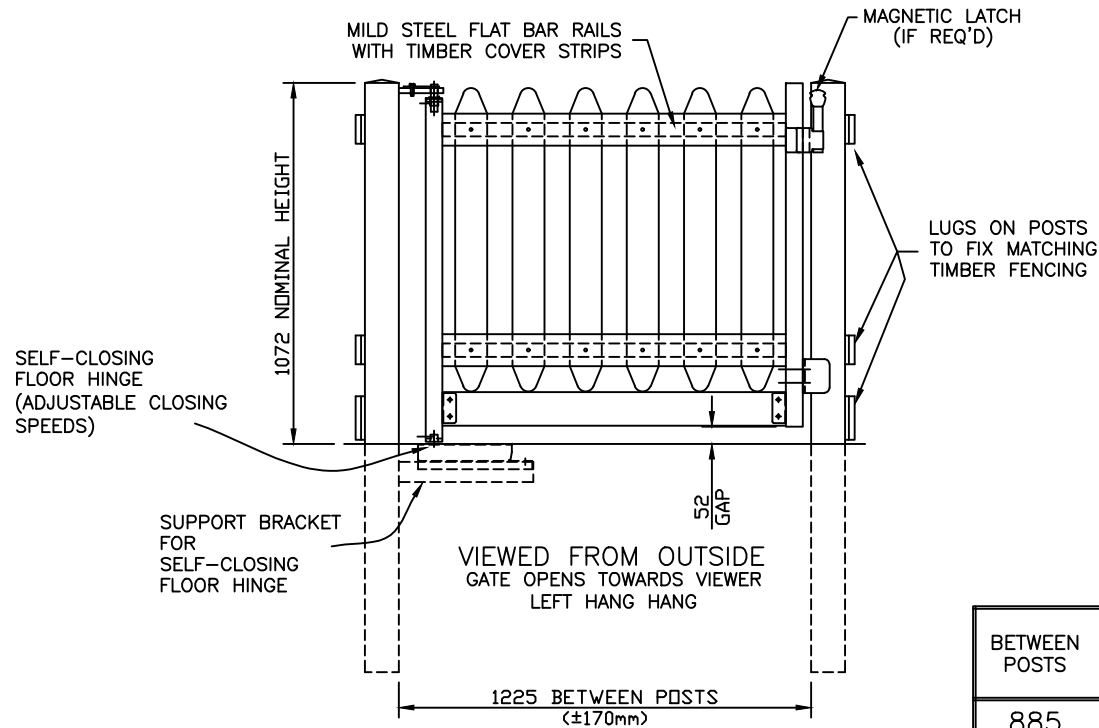
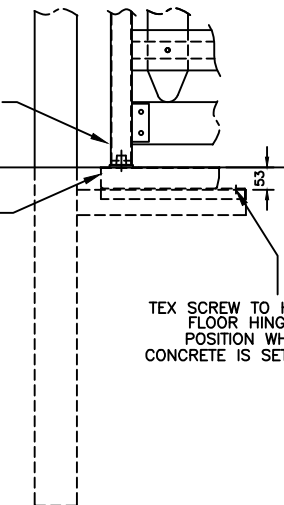
ADJUSTMENT CAN BE MADE TO THE CLOSING
 SPEED USING THE TWO SCREWS LOCATED
 UNDER THE COVER PLATE



OILITE BUSH TO
 BE INSTALLED IN
 THE TOP OF HANG
 STILE, THEN POSITION
 UNDER HINGE LUG &
 INSTALL Ø20 STAINLESS
 STEEL HINGE PIN & PLATE.
 ONCE INSTALLED SECURED
 USING AN M8 BOLT
 & SHEAR NUT.



GATE LEAF TO BE
 LOCATED ON FLOOR
 HINGE & SUPPORTED
 UNTIL TOP HINGE
 IS INSTALLED.



	BETWEEN POSTS	LEAF SIZE	CLEAR OPENING
	885	780	730
	1055	950	900
STD	1225	1120	1070

DO NOT SCALE - IF IN DOUBT ASK

Jacksons
FINE FENCING

Stowting Common
 Near Ashford,
 KENT. TN25 6BN
 Telephone : 01233 750393
 Fax: 01233 750403
 Int. Tel : +44 (0)1233 750393

- ④ 26/04/17
- ③ 17/01/11
- ② 06/01/11
- ① 01/08/08
- ① 02/01/08

Drawing Updated
 Pales amended
 NOTES
 1395 Gate Removed
 ORIGINAL ISSUE

Drawn SL
 Date 02/01/07
 Checked
 Size A3 Scale 1:15 U.O.S

TITLE S/L Wooden Playtime Gate With
 Self Closer Sales Drawing

CUSTOMER
 ACK No.

Drawing No.
 08 J8/04017
 Sheet 3 of 4