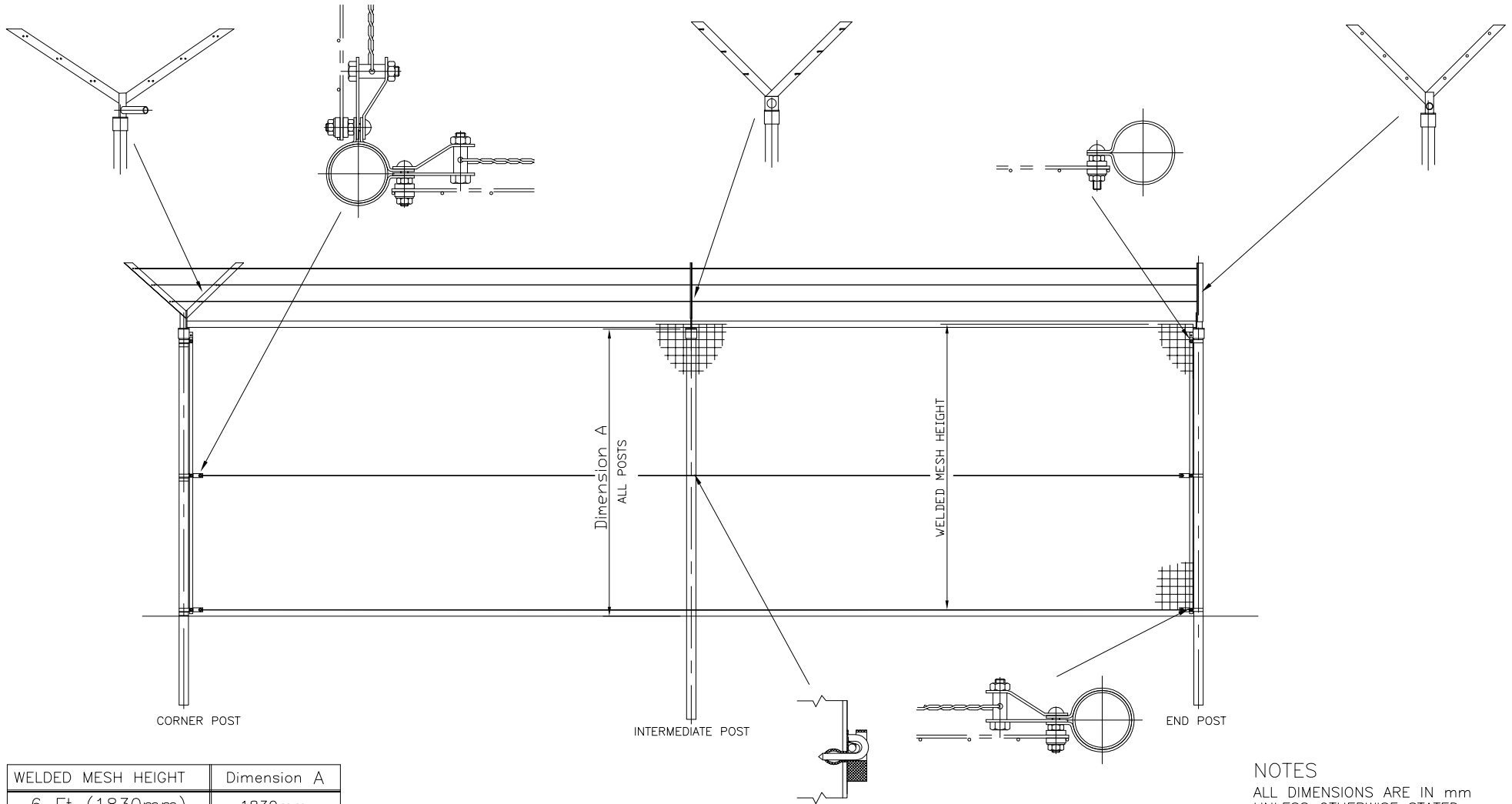


DO NOT SCALE — IF IN DOUBT ASK



CORNER POST

INTERMEDIATE POST

END POST

WELDED MESH HEIGHT	Dimension A
6 Ft (1830mm)	1830mm
8 Ft (2440mm)	2450mm
10 Ft (3050mm)	3060mm
12 Ft (3660mm)	3670mm

NOTES  
 ALL DIMENSIONS ARE IN mm  
 UNLESS OTHERWISE STATED  
 FOR INTERMEDIATE POST DRILLINGS  
 SEE Drg. J2/01016

## Imperial Welded Mesh

**Jacksons**  
**FINE FENCING**

Stowing Common  
 Near Ashford,  
 KENT. TN25 6BN  
 Telephone : 01233 750393  
 Fax: 01233 750403  
 Int. Tel : +44 (0)1233 750393

- ② 01/10/03 OFFSET STRAPS DELETED
- ① 19/09/01 Thrust Plates Removed
- ① 17/12/98 ORIGINAL ISSUE

Drawn Y HALL  
 Date 18/12/98  
 Checked  
 Size A3 Scale N.T.S  
 U.O.S

TITLE Tubular Welded Mesh  
 SYSTEM 6  
 CUSTOMER  
 Drawing No. 98 J2/01034  
 Sheet 1 of 2  
 ACK No.

This Drawing Is The Property Of H.S. Jackson & Son (Fencing) Ltd.  
 And May Not Be Copied Or Reproduced In Any Way Without Prior Written Permission.