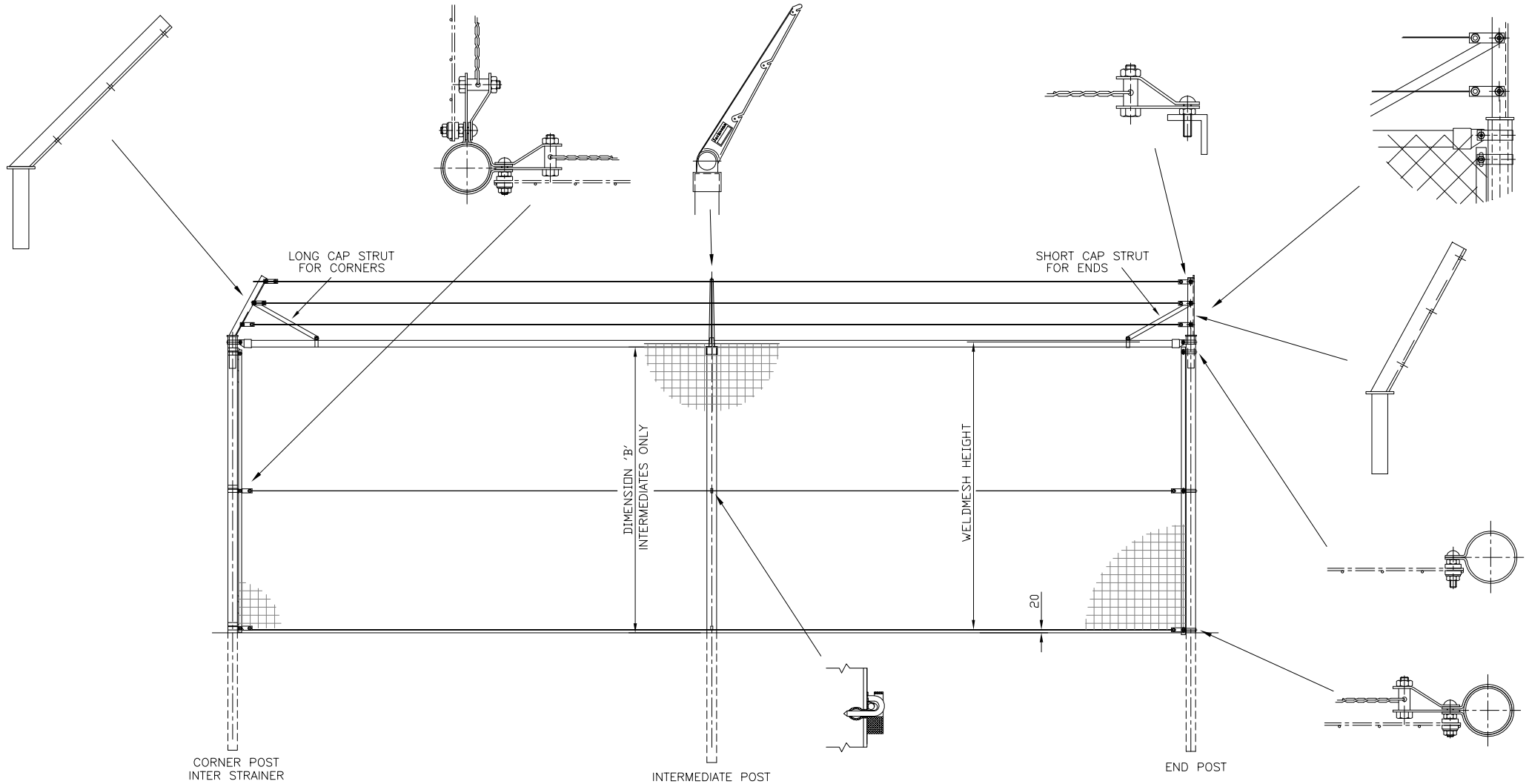


DO NOT SCALE - IF IN DOUBT ASK



WELDED MESH HEIGHT	Dimension B
6 Ft (1830mm)	1815mm
8 Ft (2440mm)	2435mm
10 Ft (3050mm)	3045mm
12 Ft (3660mm)	3655mm

## Imperial Welded Mesh

### NOTES

ALL DIMENSIONS ARE IN mm  
UNLESS OTHERWISE STATED

FOR INTERMEDIATE POST DRILLINGS  
SEE Drg. J2/01016

REFER TO DRAWING J2/01026  
FOR CRANKED EXTENSIONS

**Jacksons**  
**FINE FENCING**

Stowting Common  
Near Ashford,  
KENT. TN25 6BN  
Telephone : 01233 750393  
Fax: 01233 750403  
Int. Tel : +44 (0)1233 750393

- ④ 21/02/06
- ③ 03/06/05
- ② 01/10/03
- ① 19/09/01
- ① 17/12/98

End & Corner Brackets swapped  
NEW EXTENSIONS  
OFFSET STRAPS DELETED  
Thrust Plates Removed  
ORIGINAL ISSUE

Drawn Y HALL  
Date 18/12/98  
Checked  
Size A3  
Scale N.T.S  
U.O.S

TITLE	Tubular Welded Mesh SYSTEM 5
CUSTOMER	
ACK No.	
Drawing No.	98 J2/01033
	Sheet 1 of 2