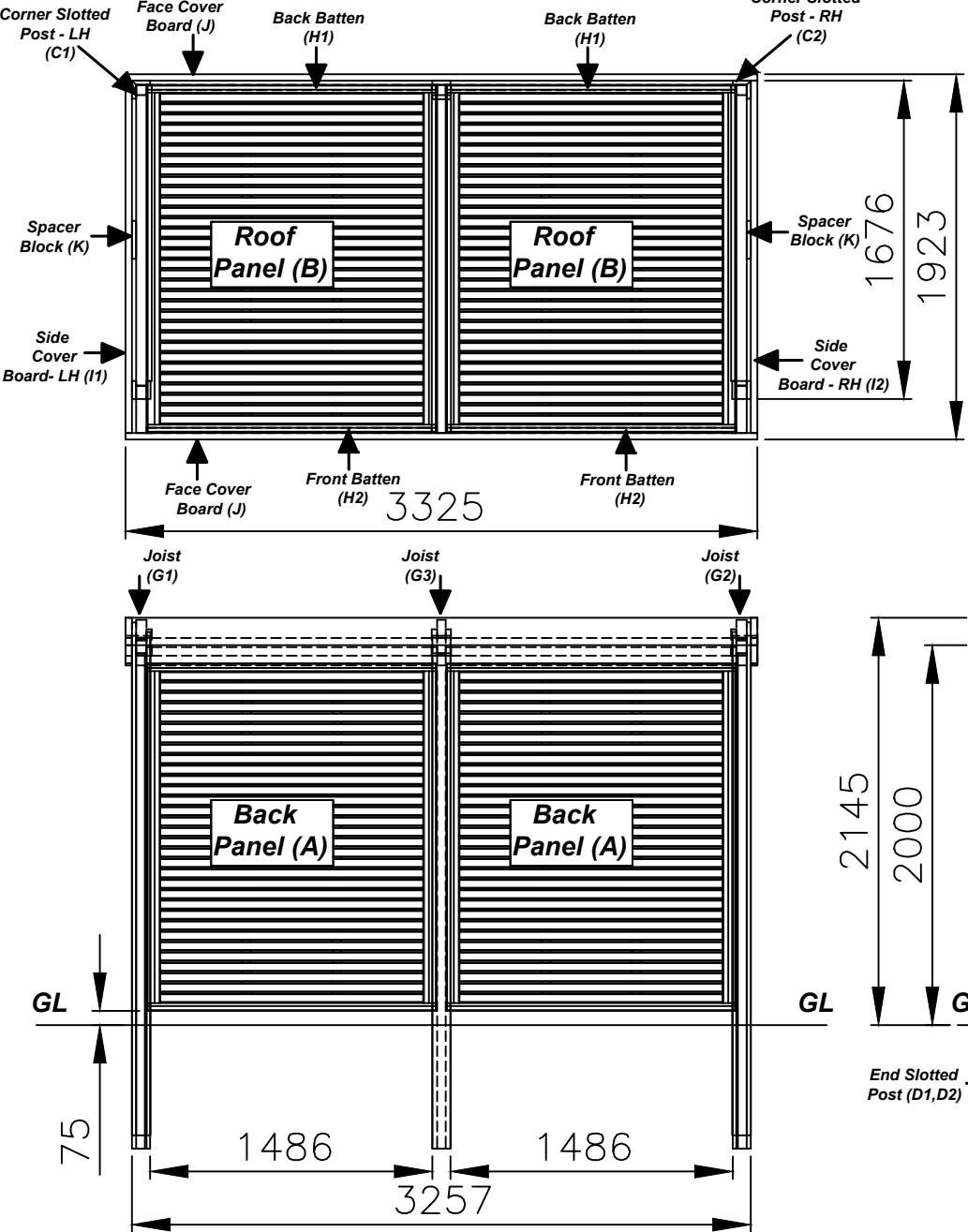
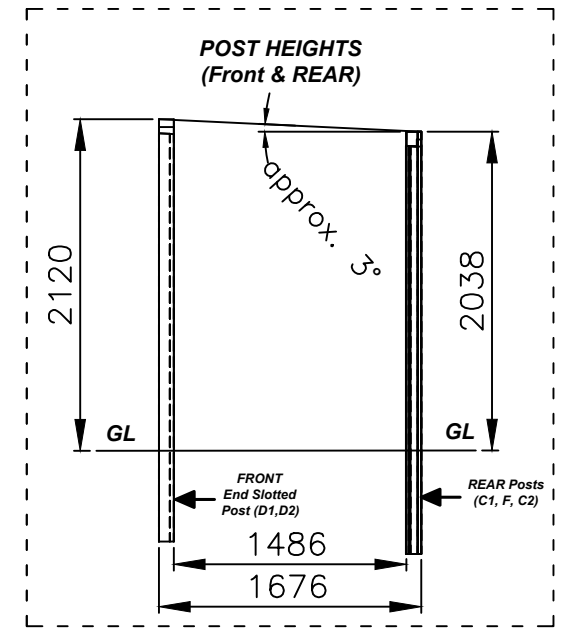
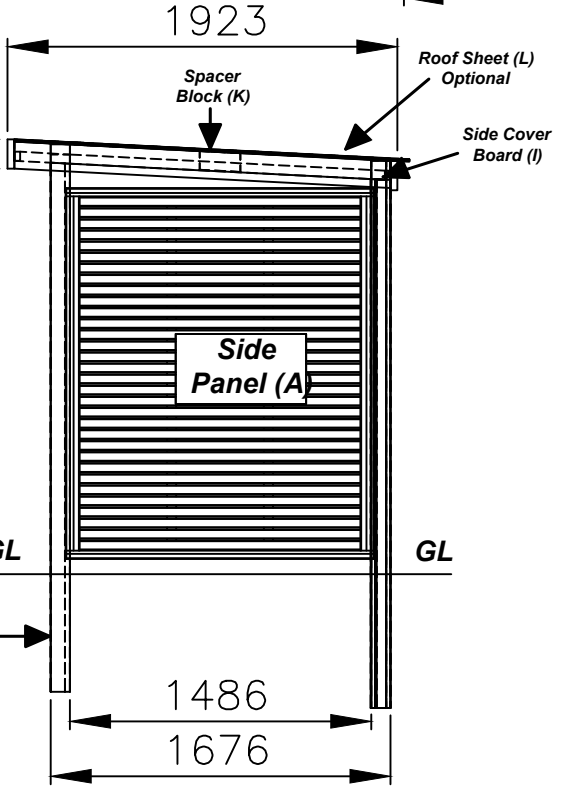
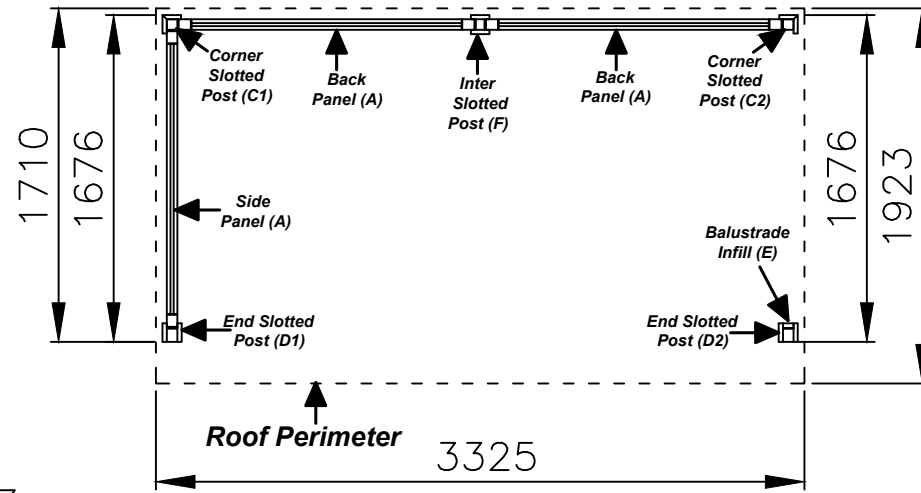


PLAN VIEW - with ROOF PANELS



FLOOR PLAN VIEW

(Posts, Back & Side Panels Positions shown)



DO NOT SCALE - IF IN DOUBT ASK

Jacksons Fencing

Stowing Common, Near Ashford,
Kent. TN25 6BN
Telephone: 01233 750393
Fax: 01233 750403
www.jacksons-fencing.co.uk

7	10/01/2020	BOM & Instructions amended
6	08/11/2019	BOM & Instructions amended
5	30/10/2015	BOM & Instructions amended
4	22/07/2015	Panel options added
3	21/07/2015	Post Infill Size Changed
2	02/07/2014	Instructions amended

Drawn	ALI
Date	12/11/2013
Checked	AT
Size	A3
Scale	1:30 u.o.s

TITLE	RETREAT (Sales & Instructions)	
CUSTOMER		Drawing No.
ACK No.		J7/02215A
		Sheet 1 of 2

This Drawing Is The Property Of H.S. Jackson & Son (Fencing) Ltd, And May Not Be Copied Or Reproduced In Any Way Without Prior Written Permission.

BILL OF MATERIAL: RETREAT		QTY
ITEM	DESCRIPTION	
A	Panels (Back & Side) 1.52m Wide x 1.83m High <i>(Venetian or Vertical Woven Panels option available.)</i>	3
B	Panels (Roof) 1.52m Wide x 1.83m High <i>(Venetian or Vertical Woven Panels option available.)</i>	2
C1	Corner Slotted Post – LH 2.7m x 95mm x 95 mm	1
C2	Corner Slotted Post – RH 2.7m x 95mm x 95 mm	1
D1	End Slotted Post – LH 2.7m x 98mm x 95mm	1
D2	End Slotted Post – RH 2.7m x 98mm x 95mm	1
E	Post Infill 2.0m x 53mm x 24mm	1
F	Inter Slotted Post 2.7m x 98mm x 95mm	1
G1	Left hand Joist 1.840m x 95mm x 82mm	1
G2	Right hand Joist 1.840m x 95mm x 82mm	1
G3	Centre Joist 1.840m x 95mm x 101mm	1
H1	Back Battens 1.474m x 45mm x 28mm	2
H2	Front Battens 1.502m x 45mm x 28mm	2
I1	Side Cover Boards – LH 1.865m x 145mm x 34mm	1
I2	Side Cover Boards – RH 1.865m x 145mm x 34mm	1
J	Face Cover Boards (Front & Rear) 3.325m x 145mm x 34mm	2
K	Spacer Blocks 0.2m x 95mm x 20mm	2
L	Polycarbonate Roof Sheet 3.235 x 1.950 m (Optional)	1
M	Fixing Buttons for Roof Sheet 45mm Long – Bags of 10 (Optional)	3
N	Decking Screws M5 x 80mm (Optional)	30
N	Decking Screws M5 x 60mm	47
P	Timber Lock Screws M6.5 x 100mm	23
Q	Hex Driver Bit for Timber Lock Screws	1
R	T25 Torx Screwdriver Bit	1
S	Self Drilling Timber Screws M6 x 80mm	12

INSTALLATION INSTRUCTIONS:

Thank you for using Jackson's Fencing. Our high quality products last for years & gives you trouble free service if you follow the installation instructions below, which are offered as general guide.

Read and understand the full instructions before starting the installation to avoid any confusion.

All timber post installations require proper drainage at the base of the post to avoid rot. For details please refer to the installation instruction, "Timber Fence Posts" on our website <http://www.jacksons-fencing.co.uk/installation-instructions.aspx>

It is important to note that each post requires approximately 60Kg of postcrete (to be ordered separately) as posts are required to be dug into the ground.

Refer to the Sketch & Bill of Material (BOM) for the positioning of the various components. Ideally none should have to be cut so if you encounter a problem please double check the dimensions before making any adjustments.

1. All posts must be installed upright with gaps to suit the 1.52m (nominal) wide panels (A) supplied. Rear posts (C1, F & C2) are installed with slightly lower height above ground from the front posts (D1 & D2) to give a slope of approximately 3 degrees towards rear. The front and rear posts height shown in POST HEIGHTS section are for level ground only. Check for ground level for post heights adjustment to give required slope of approximately 3 degrees towards rear.

2. First install Posts D1, C1 & F to form a corner. Install panels (A) into position using M5x60mm screws (N) as each post is installed. This will also help to hold the structure rigid. It is important to note that the Retreat is supplied with either Venetian Panels (horizontal slats) or Woven Panels (vertical slats) depending on the option selected.

3. Next install the RH corner post (C2) with the 1.52m wide panel (A) as shown in FLOOR PLAN VIEW. Fix the panel between the posts using M5 x 60mm screws (N), 6 No's per panel.

4. Next install the last post (D2) as shown in FLOOR PLAN VIEW and fill the slot with post infill (E) provided using M5 x 60mm screws (N), 3 No's.

5. Next install the left hand joist (G1) and right hand joist (G2) using M5 x 60mm screws (N), 4 No's per joist.

6. Next install the spacer blocks (K) at the center of each joist G1 & G2 using M5 x 60mm screws (N), 2 No's per block.

7. Next install both the side cover boards (I1 & I2) using Timber lock screws (P), 5 No's per board, and front face cover board (J) using Timber lock screws (P), 4 No's. Make sure the side cover boards (I1 & I2) and front face cover board (J) are fitted 15mm higher than the top of joists. Next install the rear face board (J) using Timber lock screws (P), 4 No's. Make sure the rear face board (J) is installed

- level with the side cover boards if no roof sheet is required

- level with the joists if a roof sheet is to be installed.

8. Next measure the mid point on the front face cover board and install the center joist (G3) using Timber lock screws (P), 4 No's, across this mid point.

9. Next install the front battens (H2) and back battens (H1) using M5 x60mm screws (N), 3 No's per batten, flush with the tops of the joists ready to support the roof panels all around their frames.

10. Next install the Roof Panels (B) using M6 x 80mm screws (S) ,6 No's per panel. For Venetian panels option, the panels should be installed with the back rails facing up.

11. Finally lay down the polycarbonate roof sheet (L) (if option is selected). It is important to note that the roof sheet should sit behind the front face cover board and extends beyond the back face cover board for rain water run off. Mark the positions for the fixing buttons on the roof sheet(L) at 500-600mm spacing around the panel frame and drill holes of 15mm diameter at the marked positions. Fix the roof sheet using 45mm fixing buttons (M) and M5 x 60mm screws (N) to complete the installation. If desired a gutter can be installed to collect this run off at the rear.

SAFETY NOTES:

Biocidal Product Regulation (EU528/2012):

Jakured articles incorporate biocidal products to protect against wood destroying organisms.

Active ingredients include: Copper(II)Carbonate / Copper(II)Hydroxide / Propiconazole / Tebuconazole

Wear gloves when handling freshly treated wood. Avoid breathing dust when cutting, Dispose of off-cuts responsibly - do not burn.

Jacksons Fencing

Stowing Common, Near Ashford,
Kent. TN25 6BN
Telephone: 01233 750393
Fax: 01233 750403
www.jacksons-fencing.co.uk

This Drawing Is The Property Of H.S. Jackson & Son (Fencing) Ltd, And May Not Be Copied Or Reproduced In Any Way Without Prior Written Permission.

⑦	10/01/2020	BOM & Instructions amended
⑥	08/11/2019	BOM & Instructions amended
⑤	30/10/2015	BOM & Instructions amended
④	22/07/2015	Panel options added
③	21/07/2015	Post Infill Size Changed
②	02/07/2014	Instructions amended

Drawn	ALI
Date	12/11/2013
Checked	AT
Size	A3
Scale	1:30 U.O.S

TITLE RETREAT (Sales & Instructions)

CUSTOMER

ACK No.

Drawing No.

J7/02215A

Sheet 2 of 2